

Transportation Information

Air travel: There are three airports in the DC metropolitan area. Ronald Reagan Washington National Airport (DCA) is conveniently connected directly to Metrorail's Yellow and Blue lines. To get to Metrorail from Dulles International Airport (IAD), take the 5A Metrobus (\$3) to the Rosslyn Metrorail station (Orange and Blue lines). To get to Metrorail from Baltimore/Washington International Thurgood Marshall Airport (BWI), take the B30 bus (\$3) to the Greenbelt Metrorail station (Green line). Or, take a shuttle from the airport to the MARC rail station and take the MARC train to Union Station, where you can get on Metrorail's Red line.

Ride sharing: Offering or looking for a ride to DC for the reunion? Go to the ride board on Facebook: <http://www.facebook.com/group.php?gid=10282888335>. (You will need to register for a Facebook account if you don't already have one. This is free and anyone can join.)

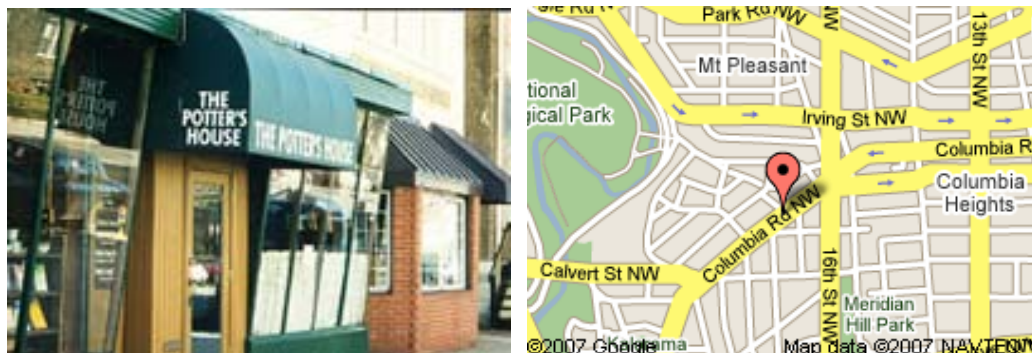
Public transportation: Metrorail opens at 5am weekdays and 7am on weekends. It closes at midnight Sunday to Thursday. On Friday and Saturday nights, it stays open until 3am. Fares range from \$1.65 to \$4.50 based on distance traveled. Farecards and day passes can be purchased with cash or credit/debit cards at all stations. Metrorail transfers are free. Metrobus operates 24 hours a day, 7 days a week, but service intervals vary by time of day. Bus rides cost \$1.35 (exact change required). Rail-to-bus transfers (issued at machines in Metrorail stations) allow you to ride the bus for 45¢. Bus-to-bus transfers are free and good for three hours. To determine the best route via bus and/or rail, go to www.wmata.com or call (202) 637-7000. The on-line trip planner is excellent and includes walking directions.

General information about the city layout: Numbered streets run north and south, ascending as you move away from the Capitol toward the east or toward the west. Lettered streets run east and west, ascending alphabetically as you move away from the Capitol toward the north or the south. Once single letters are exhausted, the alphabet system continues starts over with two-syllable names, and then again with three-syllable names. The most important part of an address is the quadrant. There could be up to four different locations with the same street address, except for the quadrant designation (329 Eighth Street NE and 329 Eighth Street SE, for example). Avenues (including ones named after each state) run in all different directions, often intersecting at circles. Two major avenues, Constitute and Independence, run east-west where the B streets should be. Interstate 495 is the beltway that encircles the city.

Directions

Potter's House

1658 Columbia Road NW
Washington, DC 20009
(202) 232-5483



Public Transportation: Take Metrorail to the Columbia Heights station (green/yellow line). Take the 14th Street southbound exit. Walk one block south on 14th St NW. Turn right on Columbia Rd NW. Walk approximately four blocks west on Columbia Rd. Potter's House is on the left. Total distance is 0.45 miles.

Driving Directions: Use Mapquest or Google Maps. Parking is available for free on the street (if you can find it – come early!) or you can briefly double park and purchase a \$5 parking permit from Potter's House for a nearby lot.

Capital Area Food Bank

645 Taylor Street NE
Washington, DC 20017
(202) 526-5344



See additional page for public transportation and driving directions. Parking is available in the lot in front of the warehouse.

Christian Communities Group Homes

2501 18th Street, NE
Washington, DC 20018

We will meet at the office and then proceed to the work site. Detailed directions will be provided later.

Washington Parks and People

Directions to the work site will be provided later.

St. Alban's Episcopal Church (on the grounds of the Washington National Cathedral)

3001 Wisconsin Ave NW
Washington, DC 20016
(202) 363-8286



Enter Lych Gate Road. The church, where the reception and silent auction will be held, is on the left and Satterlee Hall, where the dinner will be held, is on the right. Parking is available on Pilgrim Road (stay straight on Lych Gate Road and it becomes Pilgrim Road).

Public Transportation:

From Tenleytown: Take Metrorail to the Tenleytown/AU station (red line). Exit on the west side of Wisconsin Avenue. Take the 30, 32, 34 or 36 bus going south on Wisconsin Avenue. Ride approximately one and a half miles south on Wisconsin Avenue. (This is downhill, if you prefer to walk.)

From Dupont Circle: Take Metrorail to the Dupont Circle station (red line). Take the N2, N3, N4, or N6 bus to the corner of Massachusetts and Wisconsin Avenues. Walk a half a block north on Wisconsin Ave.

From Woodley Park: Take Metrorail to the Woodley Park-Zoo/Adams Morgan station (red line). Take a 90 or 92 bus toward McLean Gardens. Get off the bus at the corner of Woodley and Wisconsin Avenues. The church is on the east side of Wisconsin Avenue.

Driving Directions:

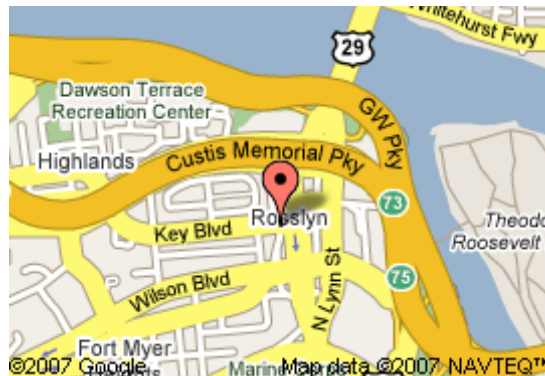
From downtown Washington: Take Massachusetts Avenue north to Wisconsin Avenue. Turn right onto Wisconsin Avenue. The church is on your immediate right.

From Maryland and the north: Take I-95 to I-495 west, the Capital Beltway. Exit south on Wisconsin Avenue. The church is approximately 6 1/2 miles on your left, just after the Cathedral and just before the intersection of Massachusetts and Wisconsin Avenues NW.

From Virginia and the south: Take I-495 over the American Legion Bridge into Maryland and take the Wisconsin Avenue/Bethesda exit. The church is approximately 6 1/2 miles on your left, just after the Cathedral and just before the intersection of Massachusetts and Wisconsin Avenues NW. **OR** Take the Memorial Bridge to the Lincoln Memorial, bearing right onto Rock Creek Parkway. Follow Parkway to Massachusetts Avenue, turning left onto Massachusetts Avenue. Then follow directions “From downtown Washington” above.

Arlington Temple United Methodist Church

1835 N Nash St
Arlington, VA 22209
(703) 525-6075



Public Transportation: Take Metrorail to the Rosslyn station (blue/orange line). Once you are at street level, walk up the stairs to the bridge. Turn left at the top of the stairs to cross the bridge over Fort Myer Drive. The doors to the church are at the end of the bridge. The church is located on top of a gas station.

Driving Directions: Use Mapquest or Google Maps. Limited parking is available on the street; we highly recommend taking public transportation if at all possible.