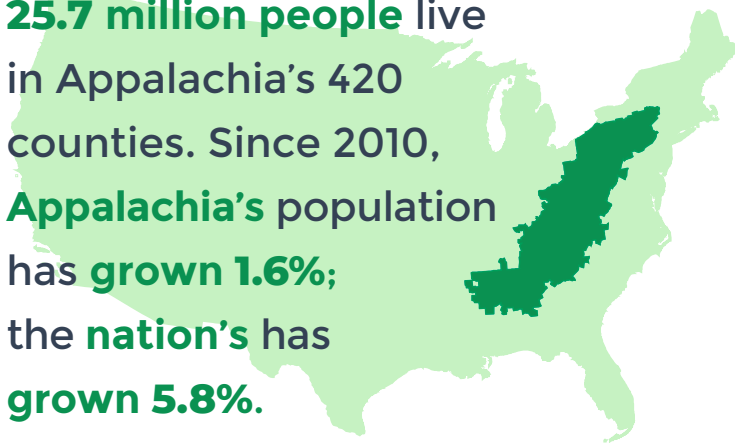


APPALACHIA'S POPULATION

Use *The Appalachian Region: A Data Overview from the 2014–2018 American Community Survey*—also known as the Chartbook—to discover more about income and poverty in Appalachia. Authored by the Population Reference Bureau with the Appalachian Regional Commission, the Chartbook features data on income, employment, education, and other indicators at the regional, subregional, state, and county levels, and examines data change over recent years to show trends. The Chartbook draws on data collected before the COVID-19 crisis to provide benchmarking for when new information becomes available. The Chartbook's population analysis compares data from 2018 and 2010 U.S. Census Bureau estimates.

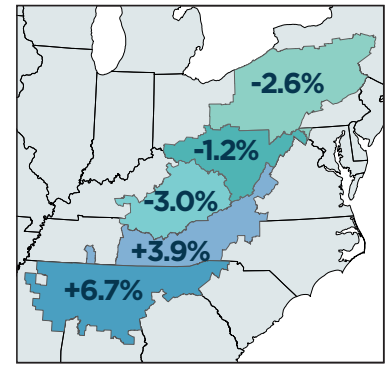
POPULATION CHANGE

25.7 million people live in Appalachia's 420 counties. Since 2010, **Appalachia's population has grown 1.6%**; the nation's has **grown 5.8%**.



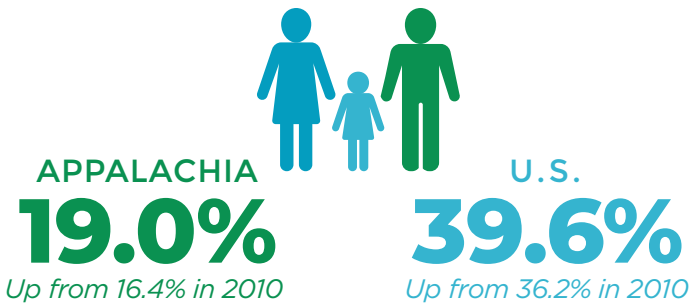
POPULATION CHANGE BY SUBREGION

While much of Appalachia has lost population since 2010, both **Southern and South Central Appalachia** have seen **growth**.



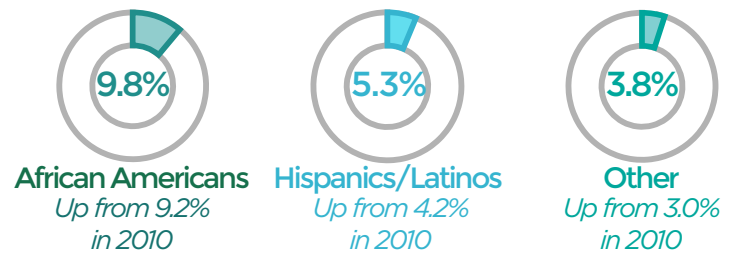
MINORITY POPULATION

Minorities make up a small but **growing share** of Appalachia's population.



MINORITY POPULATION BY GROUP

Among Appalachia's minority populations, **African Americans** are the **largest group**, while **Hispanics/Latinos** are the **fastest-growing**.



POPULATION GROWTH

Population growth in 49 Appalachian counties **exceeded the national average** between 2010 and 2018. This growth is likely due to:



Diversified economies



"Retirement Destination" designations



Proximity to major research universities



INCOME & POVERTY IN APPALACHIA

Use *The Appalachian Region: A Data Overview from the 2014–2018 American Community Survey*—also known as the Chartbook—to discover more about income and poverty in Appalachia. Authored by the Population Reference Bureau with the Appalachian Regional Commission, the Chartbook features data on income, employment, education, and other indicators at the regional, subregional, state, and county levels, and examines data change over recent years to show trends. The Chartbook draws on data collected before the COVID-19 crisis to provide benchmarking for when new information becomes available.

HOUSEHOLD INCOME

Appalachia's median household income is

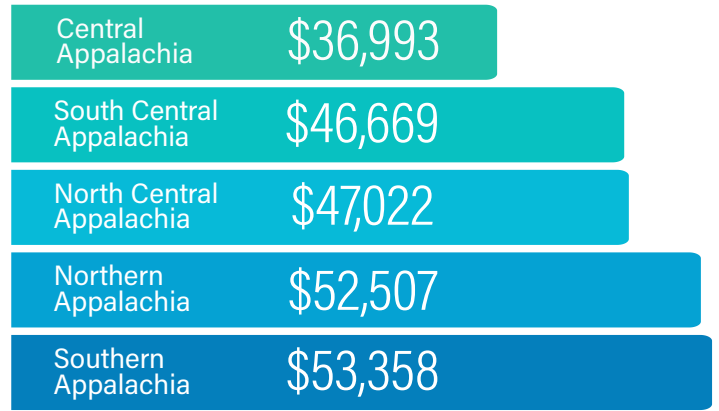
82.5%

of the U.S. figure.



HOUSEHOLD INCOME BY SUBREGION

Appalachia's median household income is lowest in Central Appalachia and highest in Southern Appalachia.



POVERTY RATE

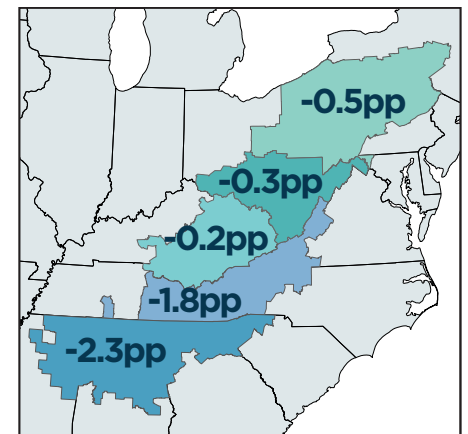
Although the Region's poverty rate declined 1.2 percentage points since 2009–2013, Appalachia's poverty rate remains higher than the U.S. average.

APPALACHIA vs U.S.
15.8% vs **14.1%**



POVERTY RATE BY SUBREGION

Appalachia's poverty rate decreased both overall and in each of the Appalachian subregions.



pp=percentage points



EMPLOYMENT IN APPALACHIA

Use *The Appalachian Region: A Data Overview from the 2014–2018 American Community Survey*—also known as the Chartbook—to discover more about income and poverty in Appalachia. Authored by the Population Reference Bureau with the Appalachian Regional Commission, the Chartbook features data on income, employment, education, and other indicators at the regional, subregional, state, and county levels, and examines data change over recent years to show trends. The Chartbook draws on data collected before the COVID-19 crisis to provide benchmarking for when new information becomes available.

LABOR FORCE PARTICIPATION



73.0%

of Appalachia's working-age adults (ages 25-64) participate in the civilian labor force. The U.S. rate is **77.6%**.

EMPLOYMENT RATE

95.2%

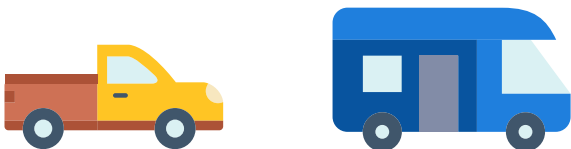
of Appalachia's labor force is employed. This is equal to the U.S. rate.



EMPLOYMENT LOCATION BY SUBREGION

31.9%

of Appalachian workers ages 16+ work outside the county they live in, compared with **27.7%** of U.S. workers.



UNEMPLOYMENT RATE BY SUBREGION

The unemployment rate for working-age adults is lowest in

Northern
Appalachia
and highest
in Central
Appalachia.

Northern
Appalachia 4.6%

South Central
Appalachia 4.7%

Southern
Appalachia 4.7%

North Central
Appalachia 5.2%

Central
Appalachia 6.9%



EDUCATION IN APPALACHIA

Use *The Appalachian Region: A Data Overview from the 2014–2018 American Community Survey*—also known as the Chartbook—to discover more about income and poverty in Appalachia. Authored by the Population Reference Bureau with the Appalachian Regional Commission, the Chartbook features data on income, employment, education, and other indicators at the regional, subregional, state, and county levels, and examines data change over recent years to show trends. The Chartbook draws on data collected before the COVID-19 crisis to provide benchmarking for when new information becomes available.

HIGH SCHOOL DIPLOMA

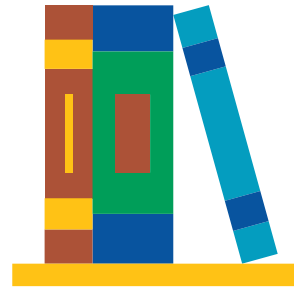
88.7%



of Appalachian adults ages 25–64 have earned a high school diploma, similar to the U.S. average of **88.8%**.

ASSOCIATE'S DEGREE

9.8%



of Appalachian adults ages 25–64 have an associate's degree—slightly more than the **9.1%** of U.S. adults.

BACHELOR'S DEGREE

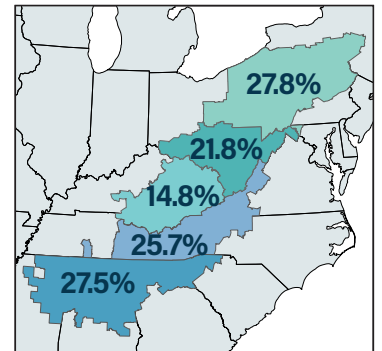


25.7%

of Appalachian adults ages 25–64 hold a bachelor's degree. The U.S. figure is **32.9%**.

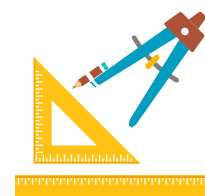
BACHELOR'S DEGREE BY SUBREGION

The share of adults ages 25–64 with a bachelor's degree is highest in Northern Appalachia and lowest in Central Appalachia.



STEM DEGREE

In Appalachia, **30.8%** of adults ages 25+ with a bachelor's degree earned it in a STEM field. The U.S. figure is **35.0%**.



COMPUTER & BROADBAND ACCESS IN APPALACHIA

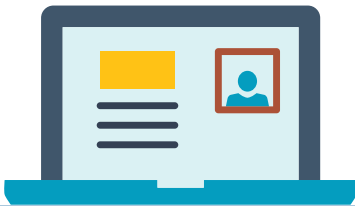
Use *The Appalachian Region: A Data Overview from the 2014–2018 American Community Survey*—also known as the Chartbook—to discover more about income and poverty in Appalachia. Authored by the Population Reference Bureau with the Appalachian Regional Commission, the Chartbook features data on income, employment, education, and other indicators at the regional, subregional, state, and county levels, and examines data change over recent years to show trends. The Chartbook draws on data collected before the COVID-19 crisis to provide benchmarking for when new information becomes available.

COMPUTER ACCESS

84.2%

of Appalachian households have access to a computer device.

The U.S. average is **88.8%**.



SMARTPHONE ACCESS

69.0%

of Appalachian households have access to a smartphone, but

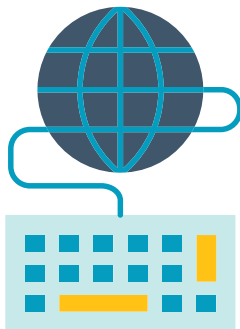
only **51.1%** have subscriptions to a cellular data plan.



BROADBAND SUBSCRIPTIONS

75.1%

of Appalachian households have a broadband subscription. The U.S. rate is **80.4%**.



BROADBAND SUBSCRIPTIONS BY SUBREGION

Broadband subscriptions are highest in Northern and Southern Appalachia and lowest in Central Appalachia.

