



GRATITUDE REPORT

2023 FISCAL YEAR

Appalachia Service Project is a Christian ministry, open to all people, that inspires hope and service through volunteer home repair and replacement in Central Appalachia.



2023 GRATITUDE REPORT

TABLE OF CONTENTS

3	PRESIDENT'S MESSAGE
4	BRIEF HISTORY OF ASP
5	WHERE WE SERVE
6	FOUNDATIONS OF ASP
7	YOU MAKE THIS WORK POSSIBLE
8	HOME REPAIR OUTREACH
10	NEW BUILD APPALACHIA
11	DISASTER RECOVERY & REBUILD
12	FOSTERING THE NEXT GENERATION OF LEADERS
13	2023 FINANCIALS
14	TEX EVANS SOCIETY MEMBERS
15	CARPENTER'S CLUB MEMBERS
18	CHAMPIONS FOR APPALACHIA
20	2023 SUMMER STAFF
22	2023 STAFF
23	2023 BOARD OF DIRECTORS

Luke 10:27 (NIV)

Love the Lord your God with all your heart and with all your soul and with all your strength and with all your mind and Love your neighbor as yourself



The verse our theme is based on, **Luke 10:27**, is a call to action urging us to live as people who love God with everything we have and who extend the love of God to all people in need—our neighbors.

We love God when we live fully in relationship with God and our neighbor. We love our neighbor when we reach out with compassion to all in need.

This connects deeply with ASP's core value of "**accepting people right where they are and just the way they are**". When we accept all people, share God's love with them and embrace them as neighbor—we become those who **Love Strong**.

Have you ever wondered who creates ASP theme art?

Well, we have **Andrew Rentz**—an immensely talented former ASP youth volunteer and summer staffer—to thank for many incredible designs through the years. He always incorporates some 'hidden' elements into the theme art.

Did you spot the hammer, nail, wrench, paint brush, or saw blade in the 2023 design?

PRESIDENT'S MESSAGE

ASP Family & Friends,

We are delighted to present to you this **2023 Gratitude Report**, a testament to our unwavering commitment to service and community building throughout the Central Appalachian region.

As we reflect on the past year, we are immensely proud of the accomplishments and impact achieved by our dedicated team and volunteers. As I (Walter) have now retired from service with ASP, it is my prayer and hope that I have provided leadership over the last 13 years that has shaped Appalachia Service Project's trajectory into the future. It's been such a pleasure to see us reach new heights, advance our mission, and transform the lives of volunteers and families in need.

At the same time, I (Melisa) am excited to have become the new President and CEO of ASP! I know I have some big shoes to fill, but I hope and pray that my passion for service and deep understanding of ASP's mission will propel us forward into the next chapter of our journey. I am confident that Appalachia Service Project will continue to thrive and expand its reach, making an even greater difference in the communities we serve.

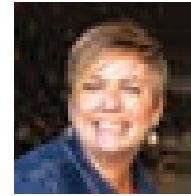
In this report, you will find stories of resilience, hope, and transformation, highlighting the impact of our programs on individuals and families across Appalachia. From home repairs and new home construction to youth leadership development initiatives and disaster recovery, each endeavor underscores our unwavering commitment to creating positive change and fostering sustainable solutions to the challenges facing our region.

As we look ahead, we are both inspired by the boundless potential of Appalachia Service Project and the incredible opportunities that lie before this organization. With the continued support of our dedicated volunteers, donors, and partners, we remain steadfast in our mission to make homes warmer, safer, and drier and to transform all those who come in contact with ASP.

Thank you for your generous support and commitment to this mission and vision. Together we are, and will continue, to make a lasting difference in the lives of those we serve.



Walter Crouch
President/CEO
(retired)



Melisa Winburn
President/CEO
(newly appointed)

2023 TOTALS

10,445

lives changed (818 family members + 9,627 volunteers)

1,335

repair projects completed

49

new homes constructed

\$9.97 million

volunteer labor donated

\$7.35 million

in equity provided to families receiving new homes

26

counties (4 states)
location of families served with home repair or replacement

\$14.1 million

organizational budget

BRIEF HISTORY OF ASP

In 1969, Rev. Glenn “Tex” Evans—a Methodist minister—became one of the first people to connect the energy of youth with the deep needs of the poor.

During Tex’s 13 years as director at Henderson Settlement in Frakes, Kentucky, he witnessed the great need for home repair assistance. As part of his already-thriving outreach to the people of Appalachia, he recruited 50 teens and adult volunteers to repair homes in Barbourville, Kentucky. They worked on-site during the day and worshiped in the evenings. By summer’s end, four families had warm, safe, and dry homes for the winter, 50 young lives had been changed forever—and a longstanding legacy was born.

But Tex was more than a leader; he was a born motivator. A true student of Appalachian culture and

a legendary storyteller, he set the tone for what ASP is today: an extended family where laughter is king. Where relationships matter. And where changing the lives of families and volunteers alike is the highest priority of all.

Our philosophy of service has remained the same since our founding: ASP encourages people to act responsibly in the face of human need and injustice.

By transforming faith into ASP service, volunteers respond to a specific need: housing. By putting aside their own needs and desires, ASP volunteers free themselves to share talent, love, and concern with the people of Appalachia and with one another.



A photo of Tex with the 1977 ASP Summer Staff.



More important than construction know-how is a willingness to enter the communities and homes of Central Appalachia with sensitivity, concern, and love—**accepting people right where they are and just the way they are.**



From an ASP scrapbook, photo of youth volunteers from Michigan doing repairs on a family's home in 1974.

Tex Evans in the 1970s during filming of a video about the roots of ASP called “Because This Is Where They Live”. The complete video is available on ASP’s YouTube channel—scan the QR code below to view it.



WHERE WE SERVE

Appalachia Service Project serves mostly rural communities across the Central Appalachian region of Kentucky, North Carolina, Tennessee, Virginia and West Virginia.

From June through August, ASP works for families in more than 20 communities across Central Appalachia. ASP leases schools, churches, and community centers to act as summer centers for volunteers and staff.

September through early May, ASP operates from permanent facilities in Southwest Virginia and Northeast Tennessee to provide critical home repair and replacement in Appalachia. Disaster recovery and rebuild efforts are coordinated from temporary field offices as needed.

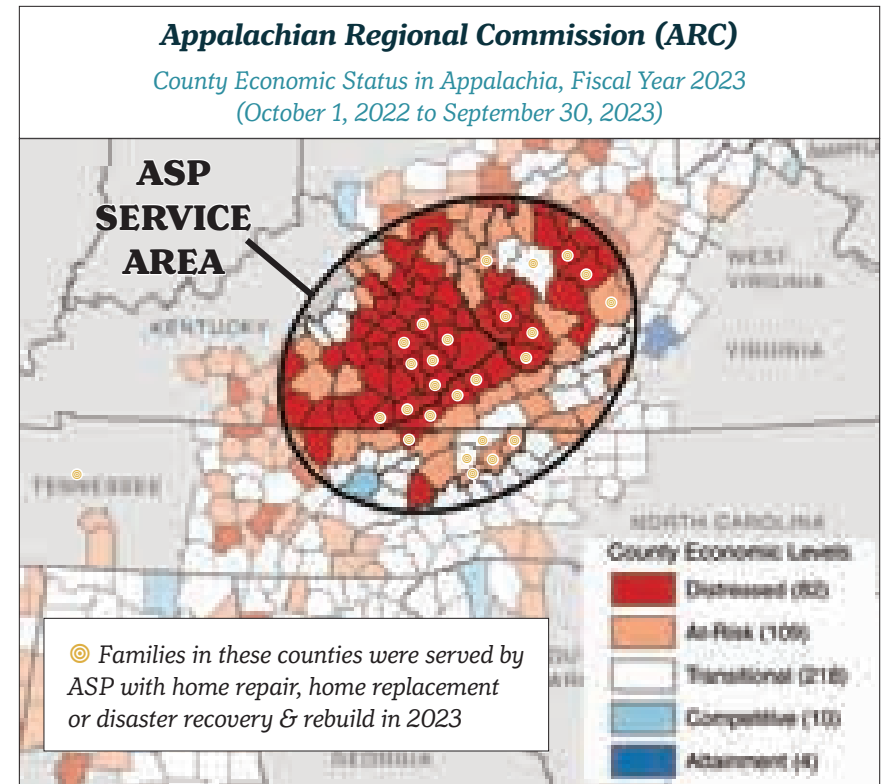
In 2023, families in 26 counties* were served by ASP through a variety of programs.

- Home Repair: 24 counties
- New Build (new home construction): 4 counties
- Disaster Recovery & Rebuild: 8 counties

**Some counties were served by multiple ASP programs*

What do these ratings mean?

Since 2007, the Appalachian Regional Commission (ARC) has used an index-based county economic classification system to identify and monitor the economic status of Appalachian counties. The system involves the creation of a national index of county economic status through a comparison of each county's averages for three economic indicators—three-year average unemployment rate, per capita market income, and poverty rate—with national averages. The resulting values are summed and averaged to create a composite index value for each county. Each county in the nation is then ranked, based on its composite index value, with higher values indicating higher levels of distress.



FOUNDATIONS OF ASP

MISSION

Appalachia Service Project is a Christian ministry, open to all people, that inspires hope and service through volunteer home repair and replacement in Central Appalachia.

GUIDING PRINCIPLES

- We believe that each person is a child of God imbued with dignity and worth.
- We accept people right where they are and just the way they are.
- We believe that all people should be able to live in affordable, safe, and sanitary housing.
- We are committed to witness through the good quality of our work and careful stewardship of our resources.

VISION

Appalachia Service Project envisions the eradication of substandard housing in Central Appalachia and the transformation of everyone who comes in contact with this ministry.

- We believe God calls people to serve others as volunteer partners in ministry and we will encourage their growth in faith as they answer this call.
- Where ASP is involved in local communities we will encourage, affirm, and support the fair and just treatment of people.
- We believe in ministering in the spirit of love, acceptance, and hopefulness.

NON-DISCRIMINATION STATEMENT

Because ASP believes everyone is a child of God, all are welcome to participate respectfully and peacefully with ASP, regardless of race, color, religion, gender identity, sex, age, national origin, ethnicity, disability, marital status, sexual orientation, or military status.



YOU MAKE THIS WORK POSSIBLE

Fulfilling ASP's mission and vision would not be possible without our many gracious ministry partners.

Thank you for making homes warmer, safer and drier and transforming lives!



HOME REPAIR OUTREACH

At ASP, we believe all people should be able to live in affordable, safe, and sanitary housing.

Shelter is a basic human need impacting all areas of life for families. By organizing domestic mission trips for thousands of youth and adults each year, we can lend a hand to our neighbors in need in this beautiful region. Families are freed from worry about leaky roofs, soft floors, or unsafe porches and stairs.

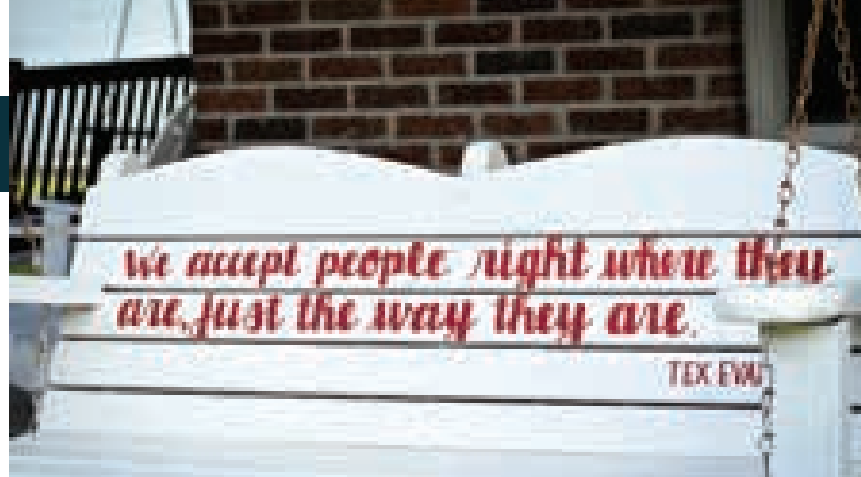
Today, with the help of about 10,000 volunteers each year, we make homes warmer, safer and drier for families in need. Yet ASP is more than a home repair and replacement program. Tex used to say that ASP is a relationship ministry, with a little construction on the side.

This emphasis on relationship—on seeing the people of Appalachia, of hearing their thoughts, stories and dreams—fosters transformational experiences for everyone involved. For volunteers, for families served, and for staff. This relationship building breaks down cultural, social and economic barriers that can divide us. Everyone involved with ASP has a story, and all stories are valued.

Tex said it best:

We accept people right where they are, just the way they are.

Every family served by ASP's home repair outreach is asked to complete a **Homeowner Satisfaction Survey**. We ask questions like what work was done on their home, how they would describe the experience, how satisfied they were with the work, and what we could do to make their experience better.



Responses like the one below remind us that ASP's impact goes beyond making someone's home warmer, safer and drier. **The relationships that volunteers and staff form with the families served truly change lives.**

You made this possible in 2023. Thank you!



It's no secret our trailer was a mess. The roof was collapsing, the bathroom inoperable, the walls coming apart. Every winter our pipes would freeze and bust, leaving us without water into mid-spring. The front porch was rotting away, and our doors were useless.

We no longer have to worry when it rains, no more worrying our water is going to freeze this winter and a lovely bath in a brand-new tub never hurt anyone. I was on my last legs by the time the ASP volunteers came, and I had absolutely no hope for my circumstances or my future. These kind souls changed my life and the lives of so many others. Bless all of you for spending your summer with us—we will never forget you!

—Homeowner

2023 HOME REPAIR STATS

245

families served
(**611** individuals)

1,335

repair projects completed

8,797

extraordinary volunteers

296,002

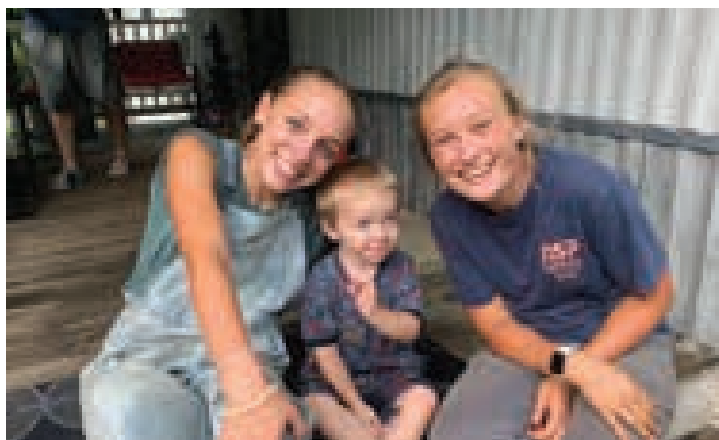
volunteer service hours

\$9.41 million

volunteer labor donated

24 counties (**4** states)

location of families served
with home repair projects



“

*What a privilege it is to go and be
the hands and feet of Christ and to
show His love to others!*

—Adult volunteer

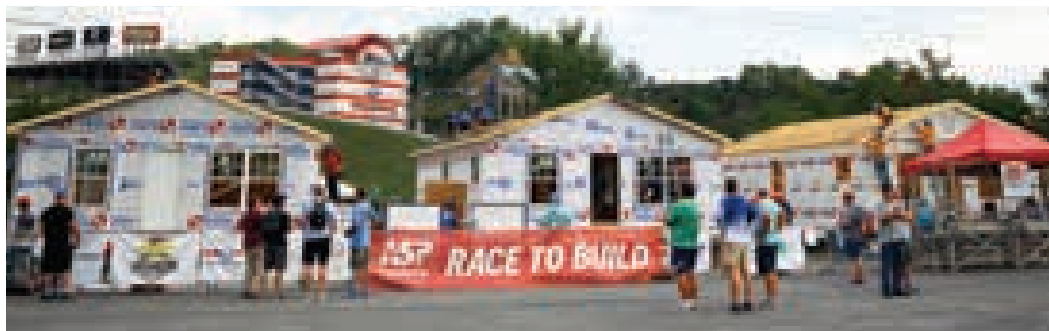
NEW BUILD APPALACHIA

When a family or individual's home is beyond reasonable repair, ASP's New Build program can provide them with the gift of a new home.

ASP is able to build these homes using a combination of grants, private gifts from friends like you, and volunteer labor.

Whether a family receives home repairs or a replacement home, we consider these GRACE GIFTS, instantly providing home equity for low-income families and ultimately changing the trajectory of their families, and communities, forever.

Typically, families served by ASP fall below 50% area median income (AMI). In most cases, they are unable to access traditional loans and mortgages and taking on long-term debt to support housing needs is a significant barrier to purchasing health care, providing nutritious food, or investing in education. However, ASP's model provides housing to families without adding debt. To be qualified for a replacement home from ASP, we verify that the family can afford the costs of taxes, utilities, insurance, and maintenance.



In 2023, three of the nine new homes constructed for families were built as part of ASP's event—**Race to Build**.

This event occurs annually at Bristol Motor Speedway during a NASCAR race weekend. ASP invites construction management and trade students from three schools across the country to utilize their construction knowledge and skills to make families' dreams of homeownership come true.

Over the course of three workdays, students compete to build families brand new homes from the ground up. Teams are judged on accuracy, safety, stewardship, and speed—and the winning team is awarded \$5,000 in scholarship funds.

Tennessee College of Applied Technology (TCAT) Elizabethton, University of Nebraska, and Kent State University competed in 2023 Race to Build, with TCAT Elizabethton taking top honors.

Ultimately, it's the Appalachian families in need that are truly the winners.

Thank you for making this possible!

NEW BUILD STATS

9

new homes constructed for families whose homes were beyond repair

101

extraordinary volunteers (\$65k volunteer labor donated)

\$1.35 million

in equity provided to families receiving new homes

DISASTER RECOVERY & REBUILD

When natural disasters strike in Appalachia, ASP steps in to help hundreds of families recover and rebuild their homes and their lives—free of charge to families.

As with ASP's New Build program, most families served by ASP's Disaster Recovery & Rebuild outreach have very low median income—less than 50% area median income (AMI). Uninsured and underinsured homeowners are often left with few options for rebuilding their homes and their lives after disasters.

However, ASP's model provides warm, safe and dry housing to families without adding debt. These GRACE GIFTS provide families with home equity that might otherwise be unattainable. Rebuilding these assets is how individuals, families, and communities gather the resources that will move them towards economic well-being, for now and for years to come.

In 2023, ASP was able to help forty (40) families recover from disaster and begin rebuilding their lives in new homes.

This wouldn't be possible without your partnership—thank you!

DISASTER RECOVERY STATS

40

new homes built for families impacted by disaster

251

extraordinary volunteers (\$287k volunteer labor donated)

\$6 million

in equity provided to these families



“

Thank you for making my home whole again. You are all angels.

—Homeowner

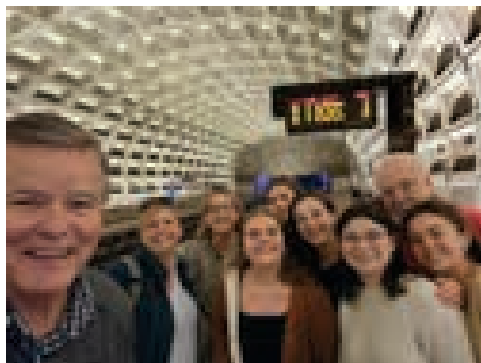
FOSTERING THE NEXT GENERATION OF LEADERS

In 2023, Appalachia Service Project (ASP) launched its inaugural **Youth Leadership Summit**, aimed at fostering the next generation of leaders among high school students.

Twenty-four young people gathered at ASP's facility in Jonesville, Virginia, during the weekend before Martin Luther King Jr. Day. During this time, they connected with like-minded peers, ASP staff, and various community leaders. The summit focused on building leadership skills, understanding the importance of a servant-minded leadership, and learning to advocate for issues affecting Central Appalachia.

Later in the year, five of these youth extended their experience by visiting Washington, DC. There, they met with members of Congress and their staff, gaining insights from experts on poverty, housing needs, and advocacy-based solutions. They also visited the Appalachian Regional Commission and the United Methodist Board of Church and Society, further enhancing their understanding of these important issues.

The Youth Leadership Summit was a tremendous success, leading to its continuation in 2024 with plans to expand into the future.



“We cannot always build the future for our youth, but we can build our youth for the future.”

President Franklin D. Roosevelt
Address at University of Pennsylvania, 1940



2023 FINANCIALS*

REVENUE & EXPENSES

\$14,123,555	Total Revenue
\$14,221,258	Total Expenses

ASSETS

\$5,120,622	Cash, Designated & Restricted
\$1,016,323	Receivables & Other
\$1,509,413	Inventories & Work In Progress
\$2,080,847	Property, Plant & Equipment
\$9,727,205	Total Assets

LIABILITIES

\$387,134	Accounts Payable
\$639,281	Deferred Revenue
\$328,731	Notes Payable
\$1,355,146	Total Liabilities

NET ASSETS

\$4,516,816	Restricted
\$3,855,243	Unrestricted
\$8,372,059	Total Net Assets

TOTAL LIABILITIES & NET ASSETS

\$9,727,205

*The figures shown here are unaudited financials. A copy of ASP's audit will become available online and by mail in June 2024. To receive a copy by mail, please call (866) 607-4433.

REVENUE BY SOURCE

Donations & Grants (86%)
Other (13%)
Merchandise (1%)

EXPENSES BY SOURCE

Program (91%)
Fundraising (5%)
Administration (4%)

Appalachia Service Project is rated a four-star charity by Charity Navigator, with an overall score of 100%



What does Charity Navigator's rating mean?

Charity Navigator provides ratings of over 225,000 charities, providing metrics on the cost-effectiveness and overall health of a charity's programs, including measures of stability, efficiency, and sustainability. The metrics inform donors of not just where their dollars are going but what their dollars are doing. Eligible charities receive a zero to four-star rating, with four-stars being the highest rating.

ASP's ratings:

- **Accountability & Finance - 100%** | assessment of a charity's financial health (financial efficiency, sustainability, and trustworthiness) and its commitment to governance practices and policies
- **Culture & Community - 100%** | assessment of the organization's culture and connectedness to the community it serves
- **Leadership & Adaptability - 100%** | assessment of the organization's leadership capacity, strategic thinking and planning, and ability to innovate or respond to changes in constituent demand/need or other relevant social and economic conditions to achieve the organization's mission



Scan this QR code to view ASP's complete charity rating on Charity Navigator

TEX EVANS SOCIETY MEMBERS

The **Tex Evans Society**, established in 2005 in honor of ASP's visionary founder, has been built by those deeply committed to making the mission and vision of ASP sustainable for the long-term future by providing for ASP through their Legacy Gifts.



By including ASP in your will, naming ASP as a beneficiary of your life insurance or retirement funds, or establishing a charitable annuity that provides you with income for life, you have the opportunity to leave a lasting legacy for both yourself and your family. Your support will enable ASP to continue its vital mission of serving Appalachian families in need for generations to come. Moreover, you can tailor your planned gift to support a specific ASP program that aligns with your passions and values.

Many thanks to these partners in ministry who are making a lasting impact for years to come.



Scan this QR code to learn about creating a will or trust for free in 20 minutes or less with our partner, FreeWill. And if you have already included ASP in your estate plans, please let us know so we can say "thank you" and include you in the Tex Evans Society.

Dave Abbott	TJ Jirousek
Deb Ahle	Beverly Job
Jim & Jan Amy	Alan & Ruth Johnson
Doug & Louise Anderson	Glenn & Mary Kinken
Mary Batson	Mary Kitzman
Richard & Jane Baxter	<i>*Barbara Ladd</i>
Roger & Laura Beal	Jay & Beth Larshus
David & Sharon Brewer	Harley Jean Lindberg
Kyle Brown	Sarah Marks
Rosemary Brown	Robert Martinelli
Tim & Connie Carleton	Mark & Sheryl Maxwell
Michael & Susan Clark	Kate & Ryan McKinnie
<i>*Floyd Collison Trust</i>	David McMillin
Tom Cullens Jr	Christopher & Donna Miller
Carl & Vicki Cunningham	Marybeth Nelson
Donald & Brenda DeBruyn	Pete & Ebba Patrick
Jenny Delfs	Mike & Jennifer Phillips
Michael & Terri DeMaster	Patsy Polilli
Chris Ernst	Shayla Rachelle
Kent Farbelow	Margaret Reid
Lee Ferrell	Wayne & Jen Rickert
Fran Field	Patricia Riker
Brian & Carol Friday	Scott Scales
<i>*Emilee Barnes Frincke</i>	Michael Schwartz
Mark & Kathy Gagnon	Carolyn Scoville
Tad & Gail Gates	Lisa Sharping
JoAnn Geijer	Steven & Debbie Snowden
Nancy Gladwell	Roger Stafford
John Grabner	Anthony Stepanek
Phyllis & George Grafton	Nancy Stokes
Alyson Grzyb	Anne Szpieg
Mike & Becky Hampen	Jack Washam
Janice Harding	Paul & Barbara Witman
<i>*Grace Harkins</i>	Phyllis Wulf
Dennis & Sherry Hilton	
Marv House	
Susan Ilax	
Matthew Ireland	

**Bequest received*

CARPENTER'S CLUB MEMBERS

The **Carpenter's Club** is ASP's group of core, committed monthly donors.

Carpenter's Club members provide ASP with a steady income, allowing us to make even more homes warmer, safer and drier for families throughout Appalachia. Knowing we can count on your monthly gifts helps ASP budget more effectively and say YES to more families in need.

Thank you for making a difference in Appalachian families' lives every single day of the year.



Scott Adams
Kate Adkison
Bert Allen & Jeannie Basinger
Shirley Allen
Margaret Almers
David & Allison Anderson
Sarah & Jon Andrews
Mark & Traci Anthony
Bill Arnold
Eric & Christy Arnold

Abbey Atchley
Brent Atchley
Alan Babey
Ned & Ellen Bachman
John Bachman
Mary Bannister
Barbara Barnes
Joan Barnes
Evan Basnaw
Jeff Bauckman
Howard & Sally Baulch
Roger & Laura Beal
Karen Beaton
Larry Beaver
Linda Beckett
David Berkey
James BeShears
Thomas Beusse
Barbara Blodgett
Stephen & Joan Boger
Bob Booth
Laurie Bovino
David & Sharon Brewer
Robert Brewer

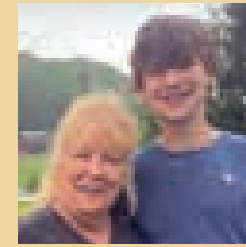
Sue Brooks
David Brown
Kevin Brown
Kyle Brown
Frances Bruns
Curtis Bullion
Tim Burgess
David & Karen Burke
Mike & Jill Burke
Monica & Steve Brist
Chris Burket
Alison Burkowske
Matthew Butler
Shelby Butler
Robert Cardiel
Elizabeth Carmack
Lori Castell
Dave Catrenich
Jim & Kristi Chadwick
Craig Chamberlain
Sarah Champagne
James & Kim Chandler
Kristina & Justin Chapman
Jane Cheema
Richard & Melinda Cheshire
Sierra Childs
Deb Clow
Barbara Cobler
Karen Coleman
Gary Cordy
James Cornett
Rebekkah Cote
Christina & Michael Crane
Dustin & Christy Crouch
Walter & Pam Crouch
Tom Cullens Jr
James & Kellie Culp
Carl & Vicki Cunningham

Jeff Daigneau
Robert Dalton
Dennis Davis
Edward & Charlotte Davis
Nancy Davis
Tony Dean
Greg & Laura DeGennaro
Gary & Sherry DeGoursey
Steven & Francine DelVecchio
Richard Desipio
Lois Dodge
David & Lettie Dressel
Flora Dugger
Sandy Ehlert
Robert Ely
Bruce Emerick
Chris Ernst
John & Wanda Evans
Roger Evans
Joanne Feldman
Rick Fenlaw
Eugene Ferg
Rachel Ferguson
EJ Ferrell & Dawn Stein
Fran Field
Susan & Ron Fielding
Michael & Mona Folds
Kimberly Fowler
Karen Frederick
Rose Fuller
Chris & Gail Fulwider
Doug & Christine Gabel
Brittany Gagne
Kieran Gallagher
Darwin & Martha Galloway
Sandra Gates
Booth Gentry
Marcia Gilbert

Jay & Carol Gilliford
 David & Jaymee Glenn-Burns
 Mark Goettsch
 Gina Goetz
 CB Goff
 Ernest Graening
 Brian & Heather Grafton
 David Gray
 DM Green
 Benjamin Gregory
 Mary Gregory
 Chris & Karen Gremban
 Clark Griffith
 Norma Grosick
 Tricia Guerrero
 Brian & Lyssa Haddock
 Jess Hallgath
 Mike & Becky Hampen
 Kathy Hanson
 Bill Harkins & Margaret McKelvey
 Sheryl & Brian Hartley
 Charles & Peggy Lou Haug
 Donna & Michael Hayman
 Thomas Heffelfinger
 Anna & John Henry
 Rob & Jennifer Herchenrider
 Jeff Herz
 Jen Herz
 Mary Hewlett
 Zack Hobbs
 Andy Hodge
 Jeff Hoffert
 Elizabeth Hoffmann
 Kathryn Hoffmann
 Kathleen Hopkins
 Joshua Horn
 Robert Houskamp
 Rebecca Houston

Steven Howard
 Kate Howell
 Mary Huey
 Charles Hummell
 Maureen Hutchinson
 John Igoe
 Sam Indorante
 Bruce & Kathy Ingram
 Larry & Sandra Ingram
 Cassandra Intagliata
 Matthew Ireland
 Jacob Isbell
 Alice Izor
 Brandy & Kevin Jabkiewicz
 Amanda Jackson
 Elizabeth Jackson
 Joseph Jichaku
 Leigh & Abraham McIntyre
 Donald & Belinda Jones
 Faye Jones
 Skip & Carmen Jones
 Laurel Kaemerer
 Karl & Anna Kapoor
 Mary Kavanaugh
 Kay Kelbley
 David & Barbara Kelley
 Kathy & Paul Kelley
 Frances Kemper
 Christian Kerrigan
 Trudi Kessler
 Kara Kessler
 Tabitha & Josh Kesterson
 Chris Keuler
 James Kever
 Craig & Joyce Kivett
 Lesta Kline
 David & Nancy Knight
 Hattie & Ryan Koher

Richard Kontny
 Andrew Krieger
 Steven Krug
 Megan Kueck
 Kevin Kuhn
 Claudia Lakey
 Sue Lamb
 Ken & Annette Landers
 James Landis
 Bryan Lane
 Al Larson
 Josh Larson
 Martha Larson
 David Lee
 Carl Lekan
 Mark Lenz
 Dorothy Lewis
 Pat & Marsha LiVecchi
 Kenton Lowry
 Anne Lutes
 Patricia MacDonald
 Ann Maguire
 Greg Manion
 Mike & Jan Markham
 James Marsh
 Abigail Martin
 John & Claire Martin
 Lauren Mast
 Barbara Masuch
 Karen Mattarella
 Laura Matthews
 Martha Maust
 Kassie McDonald
 Molly McGroary
 Peggy McJunkin
 Kate & Ryan McKinnie
 Joseph Medveczky
 Tom & Christine Michel
 Christopher & Donna Miller



ASP gave me hope that I can live after the death of my mom and two nephews. I was so sad, depressed and I had given up. Now my home is repaired and looks so good. I have the will power to try. I will never forget you.

*—Homeowner Arlene
 (Johnson County, TN)*

Emily Miller
 Gary & Linda Miller
 Hannah Miller
 Leigh Milward
 Gene Mitoro
 Tom & Karan Moore
 Bruce Morgan
 Wendy Murray
 Judi Naderhoff
 John Newton
 Danielle Niday
 Amy Nuccitelli
 Viola Okamura
 Kaitlynn O'Leary
 Carol Olson
 Livia Olson
 Mary Ondako
 Dan Owens
 Jim & Debbie Packard
 Pete Pagan
 Craig Palmer
 Brandon Parker
 Larry Patrick
 Gregory Pearce
 John & Lori Pearce

Brandon Pelletier
 Gary & Cheri Peluso-Verdend
 Abigail Pettigrew
 Elizabeth Pfrogner
 Danielle Phillips
 Barry Pittman
 Stephen Pogust
 Patsy Polilli
 Gail Pond
 Don Porteous
 Melissa Pratt
 Joe & Paige Pritchard
 Jean Przybeck
 Wilma Puccinelli
 Asad Quasem
 Michel & Jessica Radabaugh
 Roger & Mary Rayburn
 Dale & Myra Raymond
 James Reiszner
 Gary Reitnouer
 Victoria Renninger
 Anthony & Corinne Reyna
 Chris & Lauren Rhoton
 Wayne & Jen Rickert
 Jayne Robertiello
 Eric Robinson

Mark & Susanna Robinson
 Colleen Roche
 Nathaniel Rohrbaugh
 Clifford Rohrer
 James & Lori Ronca
 Fred & Diane Rostorfer
 Jacqui Rothera
 Steven Roudebush
 Kristina Rowles
 Ben Ruffley
 Chuck & Trish Rumsey Jr
 Kathy Runk
 David & Kathleen Ryan
 Jessica Rychel
 Gloria Salvatierra
 Ruth Saul
 Scott Scales
 Charlotte Schaeffer
 Larry Schaller
 Walter Scheppeke
 Kim & Randy Schmitgen
 Cindy Schneider
 Carly Schoettes
 Charles Schultz
 Scott & Jana Sedam
 Jerry & Doris Seidelman
 Donald Shaffer
 Emilia & Robert Shaldjian
 Pat Shannon
 Mabel Shartzer
 Lauri Silverstein
 John Simek
 Barbie Skelton
 Jay Slaggert
 Robert & Mary Sliwinski
 Ronald Slone
 Carol Smith
 Chris & Jennifer Smith

Greg & Cheryl Smith
 Janice Smith
 Jeffrey Smith
 Nikki Smith
 Oliver Smith
 Gary Snider
 Doug & Dawn Snyder
 Joyce & Michael Snyder
 Scott Snyder
 Leila Soulen
 Gloria Stephan
 Kamalesh Stephen
 Leslie & David Stevens
 Terry Stevens
 Lacey Stewart
 Harrison Stone
 Marian Stone
 Matt & Christine Stoops
 Emma Stowe
 Allie Struebing
 Ruby Swafford
 Alex Swenson
 Jenifer Tanis
 Hart Teague
 John Abe & Vickie Teague
 Tennessee Office Supply (Johnson
 City, TN)
 Robbie & Whitney Tester
 Charlie Thomas
 Eric Thompson
 Matthew Thompson
 Jim & Deb Thomson
 Rebecca & Eric Tice
 James Tobiason
 Robert & Marilyn Tolbert
 Janice & Vinnie Torretta
 Andy Trent
 Bob Tretler

Jordan Trinh
 Sara Tzaperas
 Darla Ura
 Mathew Verghese
 Carol Via
 Neal & Karen Voke
 Lloyd & Anita Wade
 Isabelle Wald
 Carol & Jerry Ellis
 Geraldine Walston & Lamar Walston
 Shelley Wascom
 Dale Watson
 John & Debbie Wayne III
 Autumn Weaver
 Rebecca Weaver
 Richard Weaver
 Biz Wells
 Judy White
 Rich & Susan White
 Sue & Matt White
 Paul Whittlesey
 Donna Wilcox
 Tonya Wilkes
 Constance Williams
 Melisa & Shawn Winburn
 Lawrence Winters
 Tess Wisher
 Patricia Wolf
 Amber Wolover
 Randy Wright
 Nancy Wright
 Richard Wright
 Cathy Yaggy
 Lisa Yagow
 Mark Yawn
 Rex Young
 Laura Yergler Young
 Doug Zimmer



CHAMPIONS FOR APPALACHIA

ASP has a special group of friends we call **Champions for Appalachia** who have each donated, during their lifetime, more than \$50,000 to sustain our work in Central Appalachia.

These extraordinary friends are a testament to the quality mission and ministry that take place at ASP every day. **Thank you for giving so generously in support of our friends and neighbors in need.**

Jay & Kathy Agness
Bob & Mary Almond
Bob & Mona Amburgy
American Electric Power Foundation
(Wilmington, DE)
American Red Cross
Jim & Jan Amy
Anderson Hills United Methodist
Church (Cincinnati, OH)
Armstrong Chapel United Methodist
Church (Cincinnati, OH)
Asbury Service Project (Salisbury,
MD)
Asbury United Methodist Church
(Salisbury, MD)
The Aslan Foundation (Knoxville,
TN)
Assured Insurance Consultants
(Johnson City, TN)
Mike & Peggy Ballinger
Bank of Perry County (Lobelville,
TN)
Batavia United Methodist Church
(Batavia, IL)
Jim & Merry Jean Beres

Bethel United Methodist Church
(Bethel, CT)
Cindi Bigelow
Dick & Chris Bradley
Braswell Family Farms (Nashville,
NC)
Scott & Mary Lou Braswell
Hope & Doug Brown
Claude & Hannah Burns
The Charis Foundation (Nashville,
TN)
Christian Appalachian Project
(Mount Vernon, KY)
Claude Worthington Benedum
Foundation (Pittsburgh, PA)
Cokesbury United Methodist Church
(Knoxville, TN)
Rick & Jane Combs
The Community Foundation of
Middle Tennessee (Nashville, TN)
Community Lutheran Partners
(Wheeling, WV)
Community Presbyterian Church
(Chester, NJ)
Greg & Lori Corner

Covenant United Methodist Church
(Springfield, PA)
John & Betty Ann Crandall
Walter & Pam Crouch
Darrell Cales Trust (Rainelle, WV)
Greg Davis & Suzi Townsley
Dawn & Mark Deaton
Greg & Laura DeGennaro
Don G Powell Foundation (Houston,
TX)
The Donley Foundation
David & Deirdre DuBard
East Point Ave United Methodist
Church (East Point, GA)
East Tennessee Foundation
(Knoxville, TN)
Eastman Foundation (Kingsport,
TN)
The Edward & Wanda Jordan
Foundation (Des Plaines, IL)
Chuck & Jane Ellis
Bruce & Sharon Elliston
Encore Ministry Foundation
(Nashville, TN)
Luann Engelman
Chris Ernst
Eugene A & Suzanne H Gorab
Foundation (Southport, CT)
Bill Evans
FAHE (Berea, KY)
Rachel Ferguson
EJ Ferrell & Dawn Stein
First Trinitarian Congregational
Church (Scituate, MA)
First United Methodist Church
(Westborough, MA)
First United Methodist Church
(Crystal Lake, IL)
First United Methodist Church
(Gatlinburg, TN)

First United Methodist Church
(Arlington Heights, IL)
First United Methodist Church
(Farmington, MI)
First United Methodist Church (Cary,
NC)
Foundation for Appalachian
Kentucky (Hazard, KY)
Brian & Carol Friday
Friends of Appalachia (Trumbull,
CT)
Emilee Barnes Frincke
General Electric Foundation (Boston,
MA)
Gisela B Hogan Charitable
Foundation (Boston, MA)
Gene & Suzanne Gorab
Ron & Gail Gouge
Brian & Heather Grafton
David Graham
Grandview United Methodist Church
(Lancaster, PA)
Greater Greenbrier Long-Term
Recovery Committee (Lewisburg,
WV)
The Greater Greenbrier Valley
Community Foundation
(Lewisburg, WV)
The Greater Kanawha Valley
Foundation (Charleston, WV)
Greenfield Hill Congregational
Church (Fairfield, CT)
Greg & Susan Griffith
Haggerty Family Foundation
(Minneapolis, MN)
Daniel Hannah
John & Phyllis Hart
Hartry Living Trust of 1986 (Fresno,
CA)
Everett Hellmuth
Don & Emily Henderson

Mike & Julie Hodge
 Harry & Jennifer Holdren
 Holston Foundation (Alcoa, TN)
 The Home Depot (Atlanta, GA)
 Homes for West Virginia/SBP (New Orleans, LA)
 Inspiritus (Salisbury, NC)
 Isle of Hope United Methodist Church (Savannah, GA)
 Jesse Lee Memorial United Methodist Church (Ridgefield, CT)
 David & Grace Johnson
 Katonah United Methodist Church (Katonah, NY)
 Pat & Susie Kelly
 Chris Keuler
 Pauletta King
 The Knapp Foundation (Bartlett, TN)
 USDA (Kentucky)
 Ken & Annette Landers
 Mike & Lisa LaRock
 Lilly Endowment (Indianapolis, IN)
 Lucille S Thompson Family Foundation (Knoxville, TN)
 Mark & Ellen Manion
 Bruce & Stephanie Markley
 Hugh & Regina Mathews
 Mark McIntyre
 Roger & Kathy Metcalf
 Vance & Teresa Meyer
 Sara & Dennis Miller
 Million Dollar Round Table Foundation (Park Ridge, IL)
 Mooneyhan Family Foundation (Johnson City, TN)
 Tom & Karan Moore
 Essie Morgan
 Mountain Empire Oil Company (Johnson City, TN)

Mountain Tough Recovery Team (Pigeon Forge, TN)
 Mullican Flooring (Johnson City, TN)
 Munsey Memorial United Methodist Church (Johnson City, TN)
 Nassau Presbyterian Church (Princeton, NJ)
 Marillyn Nations
 Neighbors Loving Neighbors (Lewisburg, WV)
 Katherine Ottinger
 Jonathan & Kristine Owen
 Park Bixby Towers (Los Angeles, CA)
 Pete & Ebba Patrick
 John & Lori Pearce
 Mike & Lynn Peters
 Dave & Mary Posek
 Potomac Highlands Fuller Center for Housing (Franklin, WV)
 Presbyterian Church of Orland Park (Orland Park, IL)
 Margaret Reid
 Robert G Cabell III & Maude Morgan Cabell Foundation (Richmond, VA)
 Clarinda Roe
 The Romans 13:12 Fund (Wixom, MI)
 Saint Mary Magdalene Catholic Church (Apex, NC)
 SBP (New Orleans, LA)
 Scepter (Waverly, TN)
 Jerry & Doris Seideman
 Solid Rock Carpenters (SRC) (Chicago, IL)
 Speedway Children's Charities (Bristol, TN)
 Ss Simon & Jude Catholic Church (West Chester, PA)
 St Andrew's United Methodist Church (Findlay, OH)

St John United Church (Columbia, MD)
 St Luke's United Methodist Church (Yorktown, VA)
 St Thomas of Villanova Parish (Palatine, IL)
 Stanley Black & Decker (New Britain, CT)
 State Farm Companies (Bloomington, IL)
 Steele-Reese Foundation (Lexington, KY)
 Matt & Christine Stoops
 Jay & Elaine Stowe
 Tennessee Baptist Mission Board (Franklin, TN)
 Tennessee-Western Kentucky Conference (Nashville, TN)
 Mrs C Herman Terry
 The Thompson Charitable Foundation (Knoxville, TN)
 Trinity United Methodist Church (Birmingham, AL)
 Trinity United Methodist Church (Gainesville, FL)
 Unicare Life & Health Insurance Company (Cincinnati, OH)

United Way of Greenbrier Valley (Lewisburg, WV)
 United Way of Humphreys County (Waverly, TN)
 USDA Rural Development (Virginia)
 Glenn Walker
 Waverly United Methodist Church (Waverly, TN)
 John & Debbie Wayne III
 West Virginia Conference (Charleston, WV)
 West Virginia Hosing Development Fund (Charleston, WV)
 West Virginia University Foundation (Morgantown, WV)
 Doug & Cynthia West
 Westminster Presbyterian Church (Alexandria, VA)
 Westminster Presbyterian Church (Nashville, TN)
 White Plains United Methodist Church (Cary, NC)
 Paul & Barbara Witman
 Vann & Anne York
 Randy Zinck



2023 SUMMER STAFF



KENTUCKY

Bell County (Pineville)

Grayson Bullard
Kristin Clark (Center Director)
Ben Lambright
Fran Zyla

Breathitt County (Booneville)

Matt Akins (Center Director)
Rebecca Gutierrez
Bella Lussi
Adam Shelton

Floyd County (Prestonsburg)

Macey Robertson
Ava Rodgers
Emma Seanor
Noelle Simpson (Center Director)

Harlan County (Harlan)

James Blanton (Center Director)
Jaxson Gassid
Emily Knaub
Mollie Mockert

Knott County (Carrie)

Danny Barron
Sam Humphrey
Bryce Lambright
Abby Silcox (Center Director)

Knott County (Lotts Creek)

Collin Daniels
Nicole Larson (Center Director)
Ann Marie Narske

Magoffin County (Salyersville)

Amanda Lawrence
Madeline Lee
Christian Nelson
Tyler Rhodes (Center Director)

TENNESSEE

Johnson County (Shady Valley)

Jake Adcock
Sarah Grosick
Harrison Snedeker
Katy Timari (Center Director)

Sullivan County (Blountville)

Covey Byars
Henry Erickson
Forest Good
Kathryn Lambright
Lindsey Vernon (Center Director)

VIRGINIA

Dickenson County (Nora)

Ben Connor (Center Director)
Annicka Esquivel
Tatum Landers
Haley Murray

Lee County (Jonesville)

Echo Allen
Ashtin Barker
Audrey Blandford
Julia Landis (Center Director)
Kyle Zayas

Wise County (Appalachia)

Alexis Barton (Center Director)
Madison Beaty
Madison Briden
Clarene Martin

WEST VIRGINIA

Cabell County (Huntington)

Sophie Haugh
Jack Laudati
Jake Russell
Alyssa Walawender (Center Director)

Clay County (Clay)

Rose Camden
Pete Hawkins
Lauren Larson
Claire Nowak (Center Director)

Greenbrier County (Rupert)

Madeline Brashaw
John Edward Marteja
Anne Scotty
Stephen Shupe (Center Director)

Kanawha County (Charleston)

Sarah Govert
Ryan Jubb
Daphne Spencer
Tyler Vicidomini (Center Director)

Logan County (Man)

Allison Grosick
Andrew Parent
Megan Murphy (Center Director)

Nicholas County (Craigsville)

Morgan Butler
Maya Payman (Center Director)
Ian Russell
Alex Stark

Wyoming County (Guyan Valley)

Adam Batch
Kam Payman (Center Director)
Natasha Ritcher
Lacey Scott

NEW BUILD & DISASTER RECOVERY

Patrick Pickett (New Build & Disaster Recovery)

Grey Stratton (KY Disaster Recovery)

Sarah Tel (New Build & Disaster Recovery)

OTHER SUPPORT STAFF

Accounting Intern

Derrick Sizemore

Chaplains

Scott Iams
Elwyn Murray
Kimberly Putnman
Felix Uberbacher
Shawn Winburn



Liaisons

Dylan Baedke
Abbey-Grace Bryant
Caleb Coley
V Conley
Colleen Roche
Audra White
Bridget Williams

On-Call Counselors

John Clarke
Maggie DeWeese
Ally Forshay
Megan Kalbaugh
Fran Zarcone

Story Gathering Interns

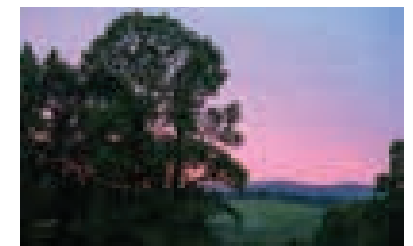
Lauren Rhodes
Brittany Secraw
Issac Wood

Summer Construction Consultants

John “Bubba John” Crandall
Angie Edwards
Shelby Mitchinson
Chris Prew

Summer Management Team

Jane Cheema
Rose Chelednik
Emma Christensen
Claire Dollins
Daniel Henninger
Sam Lansinger
Caroline Nowak
Annalee Posey
Brendan Roney
Kristina Rowles
Zack Schoettes
Grant Vermilya



There's nothing quite like a square dance in a parking lot. ASP Summer Staff work hard, but also know how to have some fun. The dance is a tradition at Summer Staff Training every year.

Sunset views from ASP's Jonesville facility can't be beat.

2023 STAFF

EXECUTIVE LEADERSHIP TEAM

Walter Crouch, Chief Executive Officer & President
Greg Degenaro, Chief Financial Officer
Kate McKinnie, Vice President of Resource Development
Melisa Winburn, Executive Vice President/Chief Operations Officer/CEO Elect

PRESIDENT'S OFFICE

Dave Kelley, Senior Vice President of Donor Engagement
Janice Torretta, Administrative Executive

ACCOUNTING

Lori Castell, Accounts Payable Specialist
Gina Goetz, Assistant Director of Accounting
Susan Miller, Senior Director of Accounting
Derrick Sizemore, Accounting Specialist
Paul Whittlesey, Accounting Specialist

ADVANCEMENT, GRANTS & PARTNERSHIPS

Lyssa Hunter Haddock, Senior Director of Advancement
Sheryl Hartley, Director of Advancement Communications
Flossie McCaffrey, Advancement Assistant
Carson Tucker, Donor Engagement Officer

Erin Andrews-Sharer, Strategic & Public Grants Manager
Lindsay Harris, Church & Foundations Grant Manager
Julie Knott, Strategic Grants Manager
Jim Powell, Grants & Strategic Corporate Partnerships

DISASTER RECOVERY

Ashley Allsbrook, Waverly & Mayfield Construction Coordinator
Mac Anderson, Waverly & Mayfield Office & Grant Compliance Coordinator
Chuck Arnold, Waverly & Mayfield Construction Superintendent
Donna Crabtree, Kentucky Disaster Recovery Office & Grant Compliance Coordinator
Haley Peck, Kentucky Disaster Recovery Office & Grant Compliance Coordinator
Chris Schroeder, Director of New Build & Disaster Recovery
Mike Sexton, Kentucky Disaster Recovery Construction Coordinator
Grant Vermilya, Kentucky Disaster Recovery Coordinator
Zeb Volpe, Kentucky Disaster Recovery Consultant

HOME REPAIR

Adam Bean, Home Repair Coordinator & Safety Officer
Rose Chelednik, Tri-Cities Program Coordinator
Daniel Henninger, Home Repair Coordinator & Safety Officer
Megan Murphy, Tri-Cities Compliance Coordinator
Caroline Nowak, Regional Coordinator
Annalee Posey, Assistant Director of Home Repair

Kristina Rowles, Director of Home Repair
Candice Templeton, Home Repair Assistant
John Thompson, Grant Compliance & Case Manager

HUMAN RESOURCES

Emma Christensen, Hiring Program Manager
Sam Lansing, Director of Human Resources
Gail Pond, Assistant Director of Human Resources
Brendan Roney, Hiring Program Manager

INFORMATION TECHNOLOGY

Skip Jones, IT Administrator

MARKETING & COMMUNICATIONS

Chelsi Crockett, Marketing & Communications Manager
Clara Leonard, Content Specialist

NEW BUILD

Matt Akins, New Build Construction Coordinator
William Hall, New Build Construction Superintendent
Erin Hartley, Office & Grant Compliance Manager
Chris Schroeder, Director of New Build & Disaster Recovery

OPERATIONS

Carl Cunningham, Fleet, Warehouse & Facilities Manager
Brick Smith, Warehouse Coordinator
Hart Teague, Office Manager
James Williams, Facility Manager

SPIRITUAL PROGRAMMING

Jane Cheema, Director of Spiritual Programming

VOLUNTEER

Marie Coffman, Volunteer Assistant
Karen Frederick, Senior Director of Volunteers
Sarah Hunnicutt, Assistant Director of Volunteers
Laura Moree, Volunteer Specialist
Jen Rickert, Volunteer Recruitment Specialist

ASP FELLOWS (2022-2023)

Matt Akins, New Build Fellow
Nate Alford, Tri-Cities Fellow
James Blanton, Jonesville Fellow
Emma Christensen, Jonesville Fellow
Claire Dollins, Jonesville Center Director Fellow
Lucas Lamb, Jonesville Fellow
Megan Murphy, Tri-Cities Fellow
Haley Peck, Waverly Disaster Recovery Fellow
Sarah Tel, Fellows Liaison
Grant Vermilya, Kentucky Disaster Recovery Fellow

ASP FELLOWS (2023-2024)

Alexis Barton, Jonesville Fellow
Madison Beaty, Jonesville Fellow
James Blanton, New Build Fellow
Collin Daniels, Kentucky Disaster Recovery Fellow
Forest Good, Tri-Cities Fellow
Julie Landis, Jonesville Center Director Fellow
Katy Timari, Jonesville Fellow

2023 BOARD OF DIRECTORS

Walter Crouch, *President / CEO*
Appalachia Service Project
Johnson City, Tennessee

John Pearce, *Chair*
Partner, Ernst & Young LLP
(Retired)
Nashville, Tennessee

Mike LaRock, *Vice Chair*
Assistant Vice President for
Foundations, Old Dominion
University
Norfolk, Virginia

Ken Landers, *Secretary*
Captain, US Navy (Retired)
Fairfax, Virginia

Doug Anderson
Teaching Associate Professor, The
George Washington University
Arlington, Virginia

Erik Andrews
Systems Engineering Fellow,
Vantage Systems
Oberlin, Ohio

Brian Brown
Lead Pastor, Woodlawn-Faith
United Methodist Church
Alexandria, Virginia

Bill Culbertson
Real Estate Executive, William E.
Culbertson Real Estate
Kitty Hawk, North Carolina

Stephen Dixon
Senior Vice President / CRA Officer,
Bank of Tennessee
Johnson City, Tennessee

Chuck Ellis
Executive Vice President, Time
Warner Cable (Retired)
Fairfield, Connecticut

Brian Erickson
Senior Pastor, Trinity United
Methodist Church
Homewood, Alabama

Mike Hodge
General Contractor / Owner, Hodge
Construction
Iowa City, Iowa

Leigh Johnson
Physician, Highlands Family Medicine
Johnson City, TN

Hattie Koher
Director of Youth Ministry, First
United Methodist Church of LaGrange
LaGrange Park, IL

Mark McIntyre
Partner / Co-Founder, Merchant
McIntyre Associates
La Canada, California

Emily Miller
Director of Development &
Communications, Teens for Food
Justice
New York, New York

Roger Mills, Jr
Owner/General Contractor, Mills
Eloge Homes
Charlotte, North Carolina

Beth Moore
Attorney / Partner, Sherrard Roe
Voigt Harbison
Nashville, Tennessee

Meg Robertson
Executive Coach / Nonprofit
Consultant, Macvian Partners
Charlotte, North Carolina

Angela Struebing
Senior Director of Marketing,
Capital One
Annandale, Virginia

Alida Ward
Co-Pastor, Greenfield Hill
Congregational Church
Fairfield, Connecticut

Brad Withrow
Partner, Ernst & Young, LLP
(Retired)
Nashville, Tennessee

BOARD MEMBERS EMERITI

Rosemary Brown
Nashville, Tennessee

Jack Gilbert
Atlanta, Georgia

Stuart Gulley
Atlanta, Georgia

David Lollis
Lexington, Kentucky

George Morris
Peoria, Illinois

Jim Robinson
Nashville, Tennessee



*ASP Staff and Fellows at the annual
Christmas Party in December 2023.*



Appalachia Service Project
4523 Bristol Highway
Johnson City, TN 37601
Toll-free (866) 607-4433
ASPhome.org