



Appalachia Service Project is a Christian ministry, open to all people, that inspires hope and service through volunteer home repair and replacement in Central Appalachia.

GRATITUDE REPORT

Fiscal Year 2024



Be kind and compassionate to one another, forgiving each other, just as in Christ, God forgave you.

—Ephesians 4:32 (NIV)

TABLE OF CONTENTS

3	PRESIDENT'S MESSAGE
4	WHO WE ARE
5	WHERE WE SERVE
6	FOUNDATIONS OF ASP
7	YOU MAKE THIS WORK POSSIBLE
10	HOME REPAIR
12	NEW BUILD
14	DISASTER RECOVERY & REBUILD
18	FINANCIALS
19	TEX EVANS SOCIETY
20	CARPENTER'S CLUB
23	CHAMPIONS FOR APPALACHIA
26	SUMMER STAFF
28	STAFF
29	BOARD OF DIRECTORS
30	CELEBRATING 55 YEARS OF SERVICE

AT ASP, WE BUILD LOTS OF THINGS—we build new homes, we build relationships, we build community. We build on the foundation of God's love shared with all of us through Christ who modeled a life of service, compassion, and intentional kindness. Stories of kindness are woven through Scripture as a way of guiding us in our relationships.

The book of Ephesians is a book about God's love for all people and in this we find instructions on how to live in unity with each other as members of the body of Christ. Our theme verse tells us that we are called to live by **Building Kindness** with each other. This is an intentional way of life where we give of ourselves in love and compassion to others. We do this with a servant heart, in humility, and we offer kindness with no expectation of receiving anything in return.

Building Kindness is foundational to building relationships and that kindness is a way of life as a follower of Christ. Let's consider **Building Kindness** not as a series of random acts, but as the potential to become a radical way of living.

- *Kindness should be extended to everyone.*
- *Kindness requires us to notice the needs around us and act.*
- *Kindness and forgiveness are deeply intertwined—to be kind, we must be willing to forgive even when it's difficult.*
- *Kindness is embodied in small, simple gestures that show love and humility.*
- *Kindness often means including those who are ostracized or marginalized.*
- *Kindness is shared through words that heal and comfort.*

We are guided by the belief that each person is a child of God, imbued with dignity and worth, and we serve our neighbors in Central Appalachia with kindness, respect, and love.

Through intentional acts of kindness, we grow in compassion for each other, offering love and forgiveness to all people. We invite you to join us as we **Build Kindness** together as service-minded disciples of Christ.



PRESIDENT'S MESSAGE

Dear ASP Family and Friends,

It's my honor to share with you our **2024 Gratitude Report**—a reflection of the love, resilience, and community that define Appalachia Service Project.

As I look back on my first year as President & CEO, I'm filled with deep gratitude. This year has been both humbling and inspiring, marked by moments of heartbreak and hope, sorrow and joy.

Just six months into my role, Hurricane Helene devastated communities across our service area. It was the largest disaster response in ASP's history, and the weight of that moment was heavy. But your generosity lifted us.

Because of your quick and faithful response, we launched into recovery with boldness—committing to repair or replace at least 200 homes. Today, families are returning to warm, safe, and dry homes because you stepped in.

Sadly, more waves of flooding have hit Kentucky, Virginia, and West Virginia this year. The need has grown again—another reminder that disasters have become more frequent, and our calling to serve is greater than ever.

And yet, even in these hardest moments, I have seen God at work through friends like you. Despite the challenges, ASP's mission has not only endured—it has grown. None of this has been easy. Growth brings new challenges, and the need continues to outpace our resources.

But through it all, our mission remains rooted in love—repairing and replacing homes and building relationships in the name of Christ.

I'm so proud of our team, who has risen to the challenge with passion and purpose. I am so thankful for your prayers, support, and belief in this vital work. Together, we are bringing light to places where it's needed most.

As I look ahead, I am inspired and have renewed faith—and deep confidence that, with God's help and your partnership, we will continue to meet the moment.

In Service Together, *Melini*



ASP GROWTH *fy24*

Secured **\$10 million** from the Appalachian Regional Commission's ARISE initiative and **\$5 million** from the Lilly Endowment to expand our ministry.

More than 3,000 donors have given \$9.1 million in disaster recovery funding toward our **\$24 million goal**—thanks to partners like Eastman Credit Union, Tennessee Baptist Disaster Relief, Lowe's, American Red Cross, and countless others like you.

10,671 volunteers served 315 families across 25 communities in 2024—thanks be to God!

And **ASP was featured on NBC Nightly News with Lester Holt**—shining a national spotlight on the transformative work you make possible.

WHO WE ARE | A brief history of ASP



IN 1969, REV. GLENN “TEX” EVANS—a Methodist minister—became one of the first people to connect the energy of youth with the deep needs of the poor.

During Tex’s 13 years as director at Henderson Settlement in Frakes, Kentucky, he witnessed the great need for home repair assistance. As part of

his already-thriving outreach to the people of Appalachia, he recruited 50 teens and adult volunteers to repair homes in Barbourville, Kentucky. They worked on-site during the day and worshiped in the evenings. By summer’s end, four families had warm, safe, and dry homes for the winter, 50 young lives had been changed forever—and a longstanding legacy was born.

But Tex was more than a leader; he was a born motivator. A true student of Appalachian culture and a legendary storyteller, he set the tone for what ASP is today: an extended family where laughter is king. Where relationships matter. And where changing the lives of families and volunteers alike is the highest priority of all.

Our philosophy of service has remained the same since our founding: **ASP encourages people to act responsibly in the face of human need and injustice.**

By transforming faith into ASP service, volunteers respond to a specific need: housing. By putting aside their own needs and desires, ASP volunteers free themselves to

share talent, love, and concern with the people of Appalachia and with one another.

More important than construction know-how is a willingness to enter the communities and homes of Central Appalachia with sensitivity, concern, and love—**accepting people right where they are and just the way they are.**



Central Appalachia | WHERE WE SERVE

APPALACHIA SERVICE PROJECT serves mostly rural communities across the Central Appalachian region of Kentucky, North Carolina, Tennessee, Virginia and West Virginia.

From June through August, ASP works for families in more than 20 communities across Central Appalachia. ASP leases schools, churches, and community centers to act as summer centers for volunteers and staff.

September through early May, ASP operates from permanent facilities in Southwest Virginia and Northeast Tennessee to provide critical home repair and replacement in Appalachia. Disaster recovery and rebuild efforts are coordinated from temporary field offices as needed.

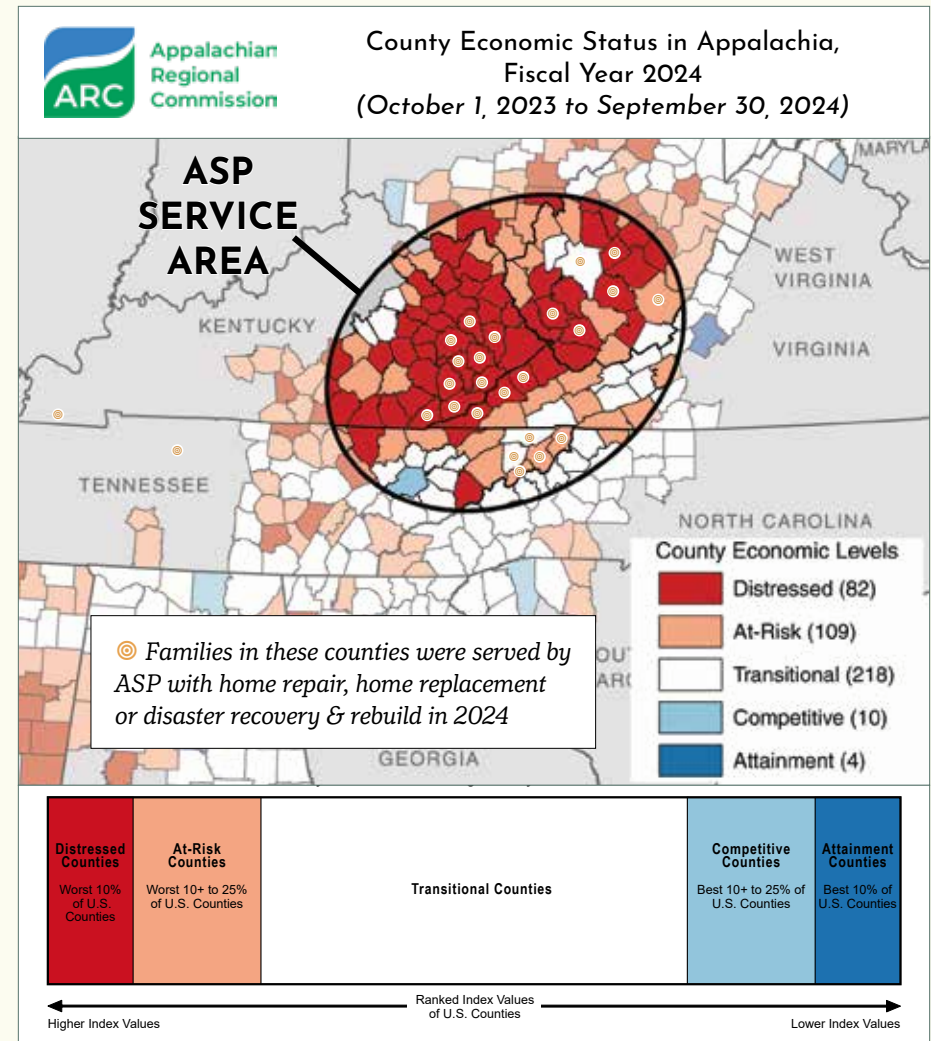
In 2024, families in 25 counties* were served by ASP through a variety of programs.

HOME REPAIR	NEW BUILD	DISASTER RECOVERY & REBUILD
22 counties	2 counties	7 counties
4 states	1 state	4 states

*Some counties were served by multiple ASP programs

WHAT DO THESE RATINGS MEAN?

Since 2007, the Appalachian Regional Commission (ARC) has used an index-based county economic classification system to identify and monitor the economic status of Appalachian counties. The system involves the creation of a national index of county economic status through a comparison of each county's averages for three economic indicators—three-year average unemployment rate, per capita market income, and poverty rate—with national averages. The resulting values are summed and averaged to create a composite index value for each county. Each county in the nation is then ranked, based on its composite index value, with higher values indicating higher levels of distress.



FOUNDATIONS OF ASP

MISSION

Appalachia Service Project is a Christian ministry, open to all people, that inspires hope and service through volunteer home repair and replacement in Central Appalachia.

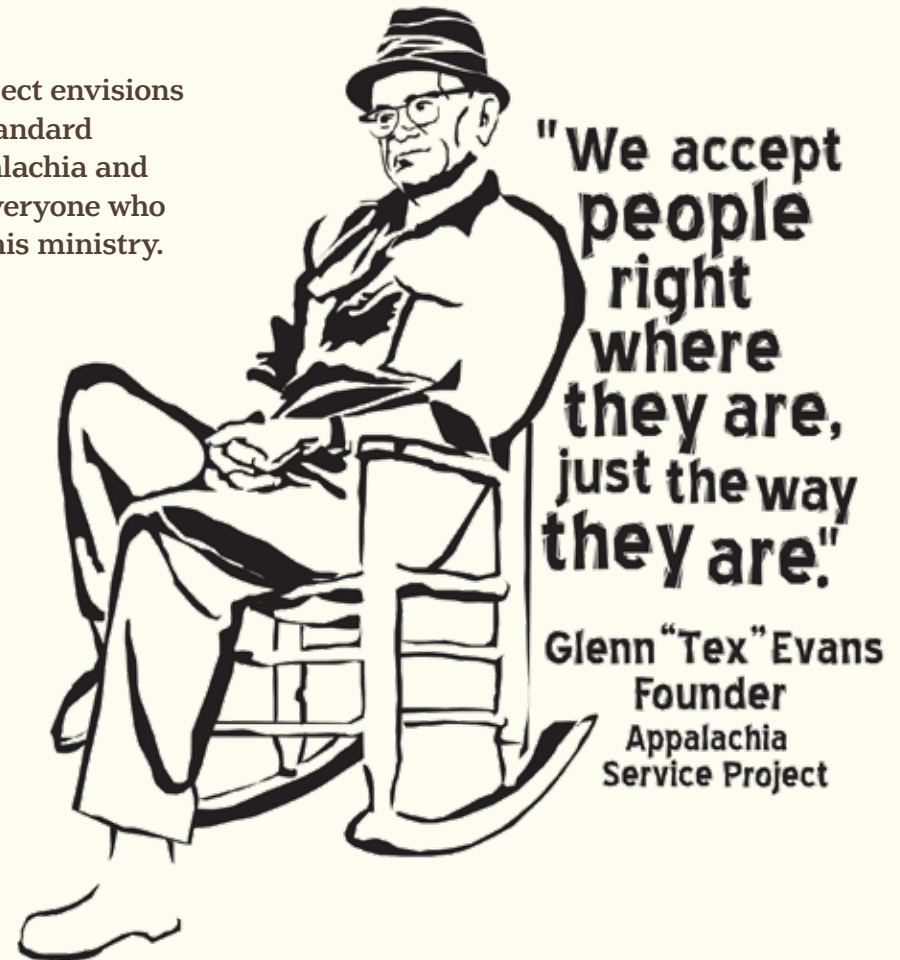
GUIDING PRINCIPLES

- We believe that each person is a child of God imbued with dignity and worth.
- We accept people right where they are and just the way they are.
- We believe that all people should be able to live in affordable, safe, and sanitary housing.
- We are committed to witness through the good quality of our work and careful stewardship of our resources.
- We believe God calls people to serve others as volunteer partners in ministry and we will encourage their growth in faith as they answer this call.

VISION

Appalachia Service Project envisions the eradication of substandard housing in Central Appalachia and the transformation of everyone who comes in contact with this ministry.

- Where ASP is involved in local communities we will encourage, affirm, and support the fair and just treatment of people.
- We believe in ministering in the spirit of love, acceptance, and hopefulness.



NON-DISCRIMINATION STATEMENT

Because ASP believes everyone is a child of God, all are welcome to participate respectfully and peacefully with ASP, regardless of race, color, religion, gender identity, sex, age, national origin, ethnicity, disability, marital status, sexual orientation, or military status.

YOU MAKE THIS WORK POSSIBLE

THROUGH THE GENEROUS SUPPORT OF OUR MANY MINISTRY PARTNERS, ASP has been able to make transformative repairs, provide replacement homes and respond to disasters for families throughout Central Appalachia.

This work has done more than just improve homes—it has restored dignity, independence, and safety to families in need.

Thanks to your support, families now have secure, accessible, and energy-efficient homes where they can thrive.

On behalf of each of these households, we extend our deepest gratitude for making this life-changing work possible.

Everything ASP did was a blessing to our family. God bless each and every one that helps make this possible.

—Homeowner (Magoffin County, KY)





The roof has made all the difference. Now it can rain all it wants to.

—Homeowner Darlene (TN)

It's the smiles of gratitude on the homeowners' faces that keeps me coming back to ASP year after year.

—Macey, ASP Youth Volunteer



We are from St. Louis, Missouri. Our son went to college at UNC. His friends' families from Asheville are all OK. We have seen the damage floods can do in Missouri and our native India. We are glad to help you all. Wish you the best going forward.

—Gopal, ASP Donor



We prayed to God for help with our home and he answered with ANGELS. Thank you from the bottom of our hearts.

—Homeowners Brian & Melissa (WV)



I feel safe being able to get in and out of my house without falling. I couldn't take my rollator down my steps before and fell all the time.

—Homeowner Renee
(Greenbrier County, WV)

My career was in home construction. I know the importance of a tight, well-insulated home. I admire your efforts!

—James, ASP Donor

HOME REPAIR | Lending a hand to our neighbors

REPAIR STATS fy24

259

families served with home repair projects in **22** counties (4 states)

1,771

repair projects completed

9,185

extraordinary volunteers donated their time (**309,036** hours!)

\$10.3 million

value of volunteer labor donated

WE BELIEVE all people should be able to live in affordable, safe, and sanitary housing.



Shelter is a basic human need impacting all areas of life for families. By organizing domestic mission trips for thousands of youth and adults each year, we can lend a hand to our neighbors in need in this beautiful region. Families are freed from worry about leaky roofs, soft floors, or unsafe porches and stairs.

Today, with the help of about 10,000 volunteers each year, we make homes warmer, safer and drier for families in need. Yet ASP is more than a home repair and replacement program.

Tex Evans used to say that ASP is a relationship ministry, with a little construction on the side.

This emphasis on relationship—on seeing the people of Appalachia, of hearing their thoughts, stories and dreams—fosters transformational experiences for everyone involved. For volunteers, for families served, and for staff. This relationship building breaks down cultural, social and economic barriers that can divide us. Everyone involved with ASP has a story, and all stories are valued.

Tex said it best:

We accept people right where they are, just the way they are.

Comments we receive from volunteers, donors and families remind us that ASP's impact goes beyond making someone's home warmer, safer, and drier.

Lives are truly changed by the relationships that volunteers and staff form with the families they serve.

Thank you for making this possible in 2024!



Thank you for all the warmth and love and kindness you've shown us!

—Homeowners (Wise County, VA)



Our experience with ASP is something I will never forget. Not only did they fix up my home, but I made some awesome friends. They were so welcoming and friendly. I loved having them at our home. If it wasn't for you all, our home wouldn't be standing much longer. We are so grateful and hope they will come back soon. Having you in my home has been the best experience.

—Homeowner (Magoffin County, KY)

I volunteered over 7 summers with my church. I left a piece of my heart with ASP and the families we helped.

—Margaret, ASP Volunteer & Donor



NEW BUILD | A fresh start

NB STATS fy24

6

families served with new homes
in **2** counties (1 state)

\$900 thousand

in equity provided to families
receiving new homes

482

extraordinary volunteers
donated their time (**4,046**
hours!)

\$135 thousand

value of volunteer labor
donated

WHEN A FAMILY OR INDIVIDUAL'S HOME is beyond reasonable repair, ASP's New Build program can provide them with the gift of a new home.

ASP is able to build these homes using a combination of grants, private gifts from friends like you, and volunteer labor.

Whether a family receives home repairs or a replacement home, we consider these grace gifts, instantly providing home equity for low-income families and ultimately changing the trajectory of their families, and communities, forever.

Typically, families served by ASP fall below 50% area median income (AMI). In most cases, they are unable to access traditional loans and mortgages and taking on long-term debt to support housing needs is a significant barrier to purchasing health care, providing nutritious food, or investing in education. However, ASP's model provides housing to families without adding debt. To be qualified for a replacement home from ASP, we verify that the family can afford the costs of taxes, utilities, insurance, and maintenance of the home.

In 2024, three of the six new homes constructed for families were built as part of ASP's event—**Race to Build**.



This event occurs annually at Bristol Motor Speedway during a NASCAR race weekend. ASP invites construction management and trade students from three schools across the country to utilize their construction knowledge and skills to make families' dreams of homeownership come true.

Over the course of three workdays, students compete to build families brand new homes from the ground up. Teams are judged on accuracy, safety, stewardship, and speed—and



the winning team is awarded \$5,000 in scholarship funds.

Tennessee College of Applied Technology (TCAT) Elizabethton, Iowa State University, and Kent State University competed in 2024 Race to Build, with Iowa State taking top honors.

Ultimately, it's the Appalachian families in need that are truly the winners.

Thank you for making this possible!



I praise God for bringing all of you into our lives! Thank you all for everything you have done for my family!

—Homeowner (Sullivan County, TN)

DISASTER RECOVERY & REBUILD | A legacy of trust

DRR STATS fy24

50

families impacted by disaster were served in **7** counties (**2** states)

10

families received home repairs

40

families received replacement homes

\$6 million

in equity provided to those families

628

extraordinary volunteers donated their time (**22,400** hours!)

\$750 thousand

value of volunteer labor donated



WHEN DISASTERS STRIKE, communities in Central Appalachia rely on Appalachia Service Project (ASP) for immediate relief and long-term recovery.

In the wake of Hurricane Helene, ASP is already rebuilding homes

and lives—just as we have for decades in West Virginia, Kentucky, Tennessee, Virginia, North Carolina, and beyond. Our history of effective disaster response, combined with our unwavering commitment to financial integrity, makes ASP a trusted partner for those seeking to make a lasting impact.



WHY APPALACHIA SERVICE PROJECT

It's difficult to understand why often those with the least to lose get hit the hardest. But we do know that ASP has been—and will be there—every step of the way. We are familiar with this region. This is where we live. This is where we work. This is home to us. And because of that, we respond when disasters strike.

ASP has stepped in to help hundreds of families recover and rebuild their homes and their lives after disaster. We are able to leverage disaster recovery funds provided to families

by FEMA to provide mortgage-free homes. We consider these homes to be grace gifts, instantly providing home equity for low-income families and ultimately changing the trajectory of their families and communities forever.

For a family that has already lost so much, taking on long-term debt to support housing needs is a significant barrier to purchasing health care, providing nutritious food, or investing in education. However, ASP's home replacement model provides adequate housing for these families without adding an additional monthly payment burden to already limited

incomes. To qualify for a home from ASP, we verify that a family can afford the costs of taxes, utilities, upkeep, and insurance.

Since 2012, ASP has successfully applied this strategy to areas affected by disaster, and we are confident in our ability to expand this program now in the wake of Hurricane Helene. Since ASP's program does not include mortgages or other fees, we are well-equipped to assist homeowners with extremely low incomes who are typically at risk of falling through the cracks of the affordable housing spectrum.





PROVEN SUCCESS IN DISASTER RESPONSE

ASP's disaster recovery efforts have spanned decades, bringing hope and stability to communities in crisis.

August 2012 | Dry Creek, Tennessee Flood

More than 50 homes in Washington County, Tennessee, were lost during a flash flood on August 5, 2012. ASP partnered

with local and national organizations to build 25 new homes within one year—all free of charge for families.

June 2016 | Rainelle, West Virginia Flood

Greenbrier County, West Virginia, was devastated by the deadliest flash flood event in the U.S. since 2010. The damage and displacement was catastrophic. ASP provided 78 families with mortgage-free homes and repaired 31 additional homes, allowing families to rebuild their lives.

November 2016 | Gatlinburg, Tennessee Wildfires

The 2016 wildfires in Sevier County, Tennessee, destroyed homes and claimed lives. ASP partnered with regional organizations to build 24 homes for affected families, providing a new foundation for recovery.

August 2021 | Waverly, Tennessee Flood

A sudden and devastating flood destroyed 272 homes and killed 20 people. ASP responded by completing 44 new homes for families in this community.

July 2022 | Eastern Kentucky Floods

A historic flood left thousands homeless across Eastern Kentucky. ASP has committed to building and/or repairing 100 homes for impacted families and has already completed 37 new homes and repaired 40 homes as part of this recovery effort.

July 2023 | Buchanan County, Virginia Floods

Severe flooding devastated this region, prompting ASP to commit to building 15 new homes for families struggling to recover. These homes will be completed by the end of 2025.

January 2024 | Clarksville, Tennessee Tornadoes

Tornadoes destroyed numerous homes in Clarksville, Tennessee. ASP has committed to constructing 20 new homes for families in 2025.

UNWAVERING FINANCIAL INTEGRITY

Donors can trust ASP to steward their gifts wisely. We maintain an exceptional financial model, with **92% of all funds directed to program expenses**—repairing and rebuilding homes for families in need. With only 4% spent on administrative costs and 4% allocated to fundraising, ASP ensures that contributions make the greatest possible impact where they are needed most.

Our financial efficiency has earned us **multi-year 4-star ratings by Charity Navigator** as well as the trust of individuals, churches, foundations, and corporate partners alike. ASP is consistently recognized for our transparency, accountability, and prudent use of resources. Each dollar given translates into tangible outcomes: roofs repaired, insulation

installed, flooring replaced, and homes built from the ground up. Every project is a testament to the generosity of our supporters and our commitment to responsible stewardship.

STANDING WITH FAMILIES AFTER HURRICANE HELENE & OTHER DISASTERS

Hurricane Helene has left families across Central Appalachia in urgent need of safe housing. ASP is uniquely equipped to respond, leveraging our decades of experience, volunteer-driven model, and strong financial stewardship to make a lasting difference. Our teams have already built 9 replacement homes and repaired 2 homes for families, with 38 more homes under construction and 20 in the planning stages.

With the trust and support of our partners, ASP will continue to bring



Vicki, on the front porch of her new home. She and her husband, Jerry, lived in a peaceful spot on the Nolichucky River for 14 years before Hurricane Helene. She lost her home, her beloved husband, and her dog in the rising floodwaters.

hope and stability to families in crisis. Your investment in our mission ensures that every family affected by disaster has the opportunity to rebuild not just their homes, but their lives.

When you give to ASP, you give more than financial support—you give families a future. **Together, we can restore hope to families, one home at a time.**

FINANCIALS | Fiscal Year 2024

FINANCIALS* fy24

REVENUE & EXPENSES

\$21,570,182	Total Revenue [†]
\$14,941,485	Total Expenses

ASSETS

\$13,343,368	Cash, Designated & Restricted
\$818,437	Receivables & Other
\$1,046,746	Inventories & Work In Progress
\$2,160,947	Property, Plant & Equipment
\$17,369,498	Total Assets

LIABILITIES

\$499,534	Accounts Payable
\$1,617,980	Deferred Revenue
\$251,242	Notes Payable
\$2,368,756	Total Liabilities

NET ASSETS

\$8,248,388	Restricted
\$6,752,354	Unrestricted
\$15,000,742	Total Net Assets

TOTAL LIABILITIES & NET ASSETS

\$17,369,498

Revenue & Expense Streams

REVENUE BY SOURCE

Donations & Grants	89%
Other	10%
Merchandise	1%

EXPENSES BY SOURCE

Program	92%	\$13,648,753
Fundraising	4%	\$650,784
Administration	4%	\$641,948

**The figures shown here are unaudited financials. A copy of ASP's audit will become available online and by mail in June 2025. To receive a copy by mail, please call (866) 607-4433.*

[†]ASP received significant funds designated for disaster recovery in 2024. Those funds will be spent in 2025 and beyond, helping families and communities to recover and rebuild from Hurricane Helene.

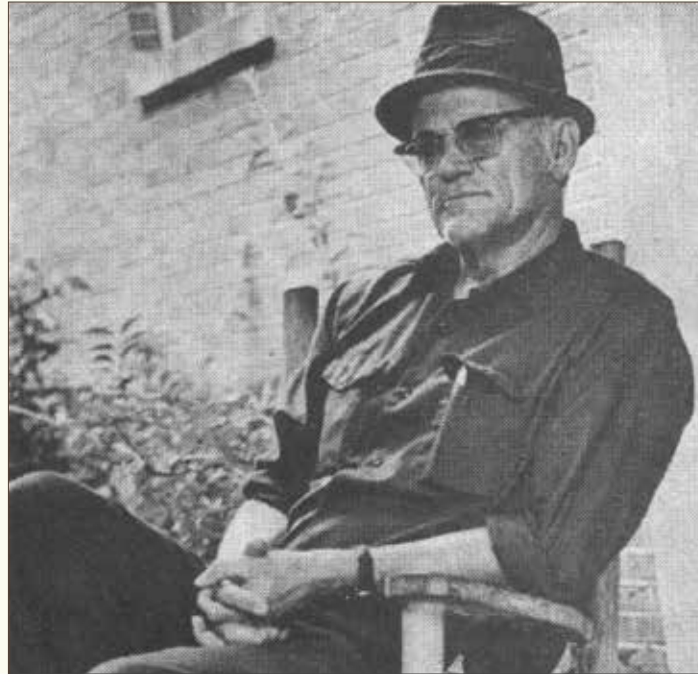


Appalachia Service Project is
rated a **four-star charity** by
Charity Navigator

WHAT DOES THIS MEAN?

Charity Navigator provides ratings of over 225,000 charities, providing metrics on the cost-effectiveness and overall health of a charity's programs, including measures of stability, efficiency, and sustainability. The metrics inform donors of not just where their dollars are going but what their dollars are doing. Eligible charities receive a zero to four-star rating, with four-stars being the highest rating.

THE **TEX EVANS SOCIETY**, established in 2005 in honor of ASP's visionary founder, has been built by those deeply committed to making the mission and vision of ASP sustainable for the long-term future by providing for ASP through their Legacy Gifts.



By including ASP in your will, naming ASP as a beneficiary of your life insurance or retirement funds, or establishing a charitable annuity that provides you with income for life, you have the opportunity to leave a lasting legacy for both yourself and your family. Your support will enable ASP to continue its vital mission of serving Appalachian families in need for generations to come. Moreover, you can tailor your planned gift to support a specific ASP program that aligns with your passions and values.

Many thanks to these partners in ministry who are making a lasting impact for years to come.



Scan this QR code to learn about creating a will or trust for free in 20 minutes or less with our partner, FreeWill. And if you have already included ASP in your estate plans, please let us know so we can say "thank you" and include you in the Tex Evans Society.

TEX EVANS SOCIETY MEMBERS

Dave Abbott
 Deb Ahle
 Jim & Jan Amy
 Doug & Louise Anderson
 Mary Batson
 Richard & Jane Baxter
 Roger & Laura Beal
 Duane Bolton
 David & Sharon Brewer
 Cheri & Shane Brown
 Kyle Brown
 Rosemary Brown
 Tim & Connie Carleton
 Michael & Susan Clark
 Carl & Vicki Cunningham
 Donald & Brenda DeBruyn
 Jenny Delfs
 Michael & Terri DeMaster
 Rebekah Derryberry
 Chris Ernst
 Kent Farbelow
 Lee Ferrell
 Fran Field
 *Martha Forbes
 *Floyd Collison Trust
 Brian & Carol Friday
 Mark & Kathy Gagnon
 Tad & Gail Gates
 JoAnn Geijer
 Nancy Gladwell
 John Grabner
 Phyllis & George Grafton
 Karen Gremban
 Alyson Grzyb
 Mike & Becky Hampen
 Janice Harding
 Dennis & Sherry Hilton
 Marv House
 Susan Ilax

Matthew Ireland
 TJ Jirousek
 Beverly Job
 Alan & Ruth Johnson
 Glenn & Mary Kinken
 Mary Kitzman
 Jay & Beth Larshus
 Josh Larson
 Harley Jean Lindberg
 Sarah Marks
 Robert Martinelli
 Mark & Sheryl Maxwell
 Kate & Ryan McKinnie
 David McMillin
 Christopher & Donna Miller
 Marybeth Nelson
 Pete & Ebba Patrick
 Mike & Jennifer Phillips
 Patsy Polilli
 Shayla Rachelle
 Margaret Reid
 Wayne & Jen Rickert
 Patricia Riker
 Scott Scales
 Michael Schwartz
 Carolyn Scoville
 Lisa Sharping
 Steven & Debbie Snowden
 Roger Stafford
 Anthony Stepanek
 Nancy Stokes
 Anne Szpieg
 Rob & Janis Thompson
 Jack Washam
 Sarah Welch
 *Hubert Whitten
 Melisa & Shawn Winburn
 Paul & Barbara Witman
 Phyllis Wulf

**bequest received*

THE **CARPENTER'S CLUB** is ASP's group of core, committed monthly donors.

Carpenter's Club members provide ASP with a steady income, allowing us to make even more homes warmer, safer, and drier for families throughout Appalachia. Knowing we can count on your monthly gifts helps ASP budget more effectively and say YES to more families in need.

Thank you for making a difference in Appalachian families' lives every single day of the year!



CARPENTER'S CLUB MEMBERS

Cindy Abel
Allie & Mike Acevedo
Scott Adams
Bert Allen & Jeannie Basinger
Shirley Allen
Cynara Allison
Margaret Almers
Mark Altizer
David & Allison Anderson
Erin Andrews-Sharer
Mark Anthony
Bill Arnold
Eric & Christy Arnold
Abbey Atchley
Brent Atchley
Alan Babey
Ned & Ellen Bachman
John Bachman
Jesse Baker
Mary Bannister
Barbara Barnes
Joan Barnes
Evan Basnaw
Jeff Bauckman
Howard & Sally Baulch
Karen Beaton
Larry Beaver
Linda Beckett
Kathleen Benz
David Berkey
James BeShears
Barbara Blodgett
Stephen & Joan Boger
Bob Booth
Laurie Bovino
Eugenia Brantley
David & Sharon Brewer

Sue Brooks
David Brown
Kevin Brown
Kyle Brown
Frances Bruns
Curtis Bullion
Tim Burgess
David & Karen Burke
Mike & Jill Burke
Monica & Steven Brist
Chris Burket
Alison Burkowske
Matthew Butler
Shelby Butler
Robert Cardiel
Vicki Hunter Carlson
Elizabeth Carmack
Lori Castell
Dave Catrenich
Jim & Kristi Chadwick
Craig Chamberlain
Sarah Champagne
James & Kim Chandler
Kristina & Justin Chapman
Jane Cheema
Richard & Melinda Cheshire
Sierra Childs
Deb Clow
Barbara Cobler
Karen Coleman

Gary Cordy
James Cornett
Rebekkah Cote
Grace Courtney
Christina & Michael Crane
Susan Creutzinger
Walter & Pam Crouch
James & Kellie Culp
Carl & Vicki Cunningham
Bob Currie
Dylan Dahley
Jeff Daigneau
Robert & Susan Dailey
Robert Dalton
Suzanne Dalton
Dennis Davis
Edward & Charlotte Davis
Nancy Davis
Tony Dean
Greg & Laura DeGennaro
Steven & Francine DeVecchio
Frances DeSimone
Richard Desipio
Nicholas Disano
Alan Dittbrenner
Stephen & Jennifer Dixon
Lois Dodge
David & Lettie Dressel
Flora Dugger

I was an ASP volunteer during high school and college in the late 80s and early/mid 90s. Appalachia and her people have never left my heart.

—Cynthia, ASP Volunteer & Donor



Paul Dumas
Charles & Kathleen Echols
Angie Edwards
Sandy Ehler
Jacqueline Ehrlich
Robert Ely
Brian & Mollie Erickson
Chris Ernst
Julie Esquinaldo
John & Wanda Evans
Roger Evans
Carol Evoniuk
Joanne Feldman
Rick Fenlaw
Eugene Ferg
Rachel Ferguson
EJ Ferrell & Dawn Stein
Fran Field
Andrew Folds
Michael & Mona Folds

David & Lorraine Fowler
Kimberly Fowler
Rose Fuller
Chris & Gail Fulwider
Douglas Gabel
Brittany Gagne
Kieran Gallagher
Darwin & Martha Galloway
Sandra Gates
Booth Gentry
Marcia Gilbert
Jay & Carol Gilliford
David & Jaymee Glenn-Burns
Mark Goettsch
Gina Goetz
CB Goff
Grace Meadows Church
(Jonesborough, TN)
Ernest Graening
Brian & Heather Grafton

David Gray
DM Green
Michael Green
Benjamin Gregory
Karen Gremban
Clark Griffith
Tricia Guerrero
Brian & Lyssa Haddock
Russell Hadley
Gabriel Hammock
Mike & Becky Hampen
Kathy Hanson
Bill Harkins & Margaret
McKelvey
Sheryl & Brian Hartley
Charles & Peggy Lou Haug
Marti Hause
Donna & Michael Hayman
Matt Headland
Thomas Heffelfinger
Anna & John Henry
Rob & Jennifer Herchenrider
Jeff Herz
Jen Herz
Mary Hewlett
Victoria Hiscott
Zack Hobbs
Andy Hodge
Jeff Hoffert
Janice Hoffman
Elizabeth Hoffmann
Kathryn Hoffmann
Kathleen Hopkins
Josh Horn
Mary Horn
Robert Houskamp
Steven Howard
Kate Howell
Keith & Erin Hudolin
Mary Huey
Charles Hummell

John Igoe
Sam Indorante
Bruce & Kathy Ingram
Larry & Sandra Ingram
Cassandra Intagliata
Lisa Irby
Matthew Ireland
Jacob Isbell
Brandy & Kevin Jabkiewicz
Amanda Jackson
Elizabeth Jackson
Paul Jaworowski
Joseph Jichaku
Leigh & Abraham McIntyre
Donald & Belinda Jones
Faye Jones
Skip & Carmen Jones
Laurel Kaemerer
Karl & Anna Kapoor
Mary Kavanaugh
Lauren Keiser
Kay Kelbley
David & Barbara Kelley
Kathy & Paul Kelley
Frances Kemper
Carol Kepple
Christian Kerrigan
Tabitha & Josh Kesterson
Chris Keuler
James Kever
Craig & Joyce Kivett
Lesta Kline
David & Nancy Knight
Hattie & Ryan Koher
Richard Kontny
Andrew Krieger
Steven Krug
Megan Kueck
Kevin Kuhn
Sue Lamb
Anthony Lancellotti

Ken & Annette Landers
Tatum Landers
James Landis
Al Larson
Josh Larson
Martha Larson
David Lee
Carl Lekan
Mark Lenz
Dorothy Lewis
Victor Lewis
Bethal Little
Pat & Marsha LiVecchi
Kenton Lowry
Anne Lutes
Patricia MacDonald
Ann Maguire
Greg Manion
Mike & Jan Markham
James Marsh
Abigail Martin
John & Claire Martin
Larry & Kristine Martin
Lauren Mast
Barbara Masuch
Karen Mattarella
Laura Matthews
Martha Maust
Molly McGroary
Peggy McJunkin
Kate & Ryan McKinnie
Joseph Medveczky
Emmett Meinzer
Tom & Christine Michel
Christopher & Donna Miller
Emily Miller
Gary & Linda Miller
Hannah Miller
Leigh Milward
Gene Mitoro
Brian Moeller

Tom & Karan Moore
 Bruce Morgan
 Wendy Murray
 Judi Naderhoff
 Barbara Ness
 John Newton
 Danielle Niday
 Amy Nuccitelli
 Viola Okamura
 Kaitlynn O'Leary
 Livia Olson
 Mary Ondako
 Dan Owens
 Jim & Debbie Packard
 Pete Pagan
 Craig Palmer
 Brandon Parker
 Larry Patrick
 Gregory Pearce
 John & Lori Pearce
 Brandon Pelletier
 Gary & Cheri Peluso-
 Verdend
 Abigail Pettigrew
 Elizabeth Pfrogner
 Danielle Phillips
 Barry Pittman
 Stephen Pogust
 Patsy Polilli
 Don Porteous
 Cynthia Poulter
 Melissa Pratt
 Joe & Paige Pritchard
 Gino Puccinelli
 Asad Quasem
 Anna Quinn
 Michel & Jessica Radabaugh
 Roger & Mary Rayburn
 Dale & Myra Raymond
 James Reiszner
 Victoria Renninger

Anthony & Corinne Reyna
 Jennifer Reynolds
 Chris & Lauren Rhoton
 Wayne & Jen Rickert
 Patricia Riker
 Brian & Laura Ring
 Jayne Robertiello
 Eric Robinson
 Mark & Susanna Robinson
 Colleen Roche
 Nathaniel Rohrbaugh
 Clifford Rohrer
 James & Lori Ronca
 Charlene Rorick

Fred & Diane Rostorfer
 Jacqui Rothera
 Steven Roudebush
 Kristina Rowles
 Ben Ruffley
 Chuck & Trish Rumsey Jr
 Kathy Runk
 David & Kathleen Ryan
 Jessica Rychel
 Ruth Saul
 Scott Scales
 Larry Schaller

Walter Scheppke
 Kim & Randy Schmitgen
 Carly Schoettes
 Charles Schultz
 Scott & Jana Sedam
 Jerry & Doris Seidelman
 Donald Shaffer
 Emilia & Robert Shaldjian
 Pat Shannon
 Cameron Shore
 Lauri Silverstein
 John Simek
 Linda Sinko
 Barbie Skelton

Jay Slaggert
 Robert & Mary Sliwinski
 Ronald Slone
 Carol Smith
 Chris & Jennifer Smith
 Greg & Cheryl Smith
 Janice Smith
 Jeffrey Smith
 Linda Smith
 Nikki Smith
 Kara Kessling
 Gary Snider

Doug & Dawn Snyder
 Joyce & Michael Snyder
 Scott Snyder
 Leila Soulen
 Sarah & Jon Stafford
 Gloria Stephan
 Kamalesh Stephen
 Harriet Sternberg
 Leslie & David Stevens
 Terry Stevens
 Lacey Stewart
 Ramona Stewart
 Nancy Stokes
 Harrison Stone
 Marian Stone
 Matt & Christine Stoops
 Thomas Stovall
 Emma Stowe
 Jack Sutphen
 Ruby Swafford
 Alex Swenson
 Jenifer Tanis
 Hart Teague
 John Abe & Vickie Teague
 Tennessee Office Supply
 (Johnson City, TN)
 Robbie & Whitney Tester
 Charlie Thomas
 Eric Thompson
 Matthew Thompson
 Jim & Deb Thomson
 Rebecca & Eric Tice
 James Tobiason
 Robert & Marilyn Tolbert
 Janice & Vinnie Torretta
 Andy Trent
 Bob Tretler
 Jordan Trinh
 Sara Tzaperas
 Darla Ura
 Abbey Veit
 Mathew Verghese

Carol Via
 Neal & Karen Voke
 Lloyd & Anita Wade
 Isabelle Wald
 Evan Walker
 Carol & Jerry Ellis
 Geraldine Walston & Lamar
 Walston
 Jill Walton
 Alida Ward & David Rowe
 Maggie Ward
 Shelley Wascom
 Patricia Watkins
 Dale Watson
 John & Debbie Wayne III
 Autumn Weaver
 Rebecca Weaver
 Richard Weaver
 Eric & Anne Weil
 Biz Wells
 Judy White
 Rich & Susan White
 Sue & Matt White
 Paul Whittlesey
 Donna Wilcox
 Tonya Wilkes
 Constance Williams
 Melisa & Shawn Winburn
 David Windsperger
 Lawrence Winters
 Tess Wisher
 Patricia Wolf
 Amber Wolover
 Randy Wright
 Nancy Wright
 Richard Wright
 Cathy Yaggy
 Lisa Yagow
 Mark Yawn
 Laura Yergler
 Doug Zimmer

Love the work that ASP does!!! I spent a week with ASP with my youth group every summer I was in high school and those experiences were transformative. Praying for you all and the wonderful work you are doing! Continue sharing the love!!

—Jennifer, ASP Volunteer & Donor

CHAMPIONS FOR APPALACHIA

ASP HAS A SPECIAL GROUP OF FRIENDS we call **Champions for Appalachia** who have each donated, during their lifetime, more than \$50,000 to sustain our work in Central Appalachia.

These extraordinary friends are a testament to the quality mission and ministry that take place at ASP every day.

Thank you for giving so generously in support of our friends and neighbors in need.

CHAMPIONS FOR APPALACHIA

AEP Foundation (Columbus, OH)
Jay & Kathy Agness
Bob & Mary Almond
Bob & Mona Amburgy
American Electric Power Foundation (Wilmington, DE)
American Red Cross
Jim & Jan Amy
Anderson Hills United Methodist Church (Cincinnati, OH)
Appalachian Relief Coordination (Greenville, TN)
Armstrong Chapel United Methodist Church (Cincinnati, OH)
Asbury Service Project (Salisbury, MD)

Asbury United Methodist Church (Salisbury, MD)
The Aslan Foundation (Knoxville, TN)
Assured Insurance Consultants (Johnson City, TN)
Mike & Peggy Ballinger
Bank of Perry County (Lobelville, TN)
Batavia United Methodist Church (Batavia, IL)
Jim & Merry Jean Beres
Bethel United Methodist Church (Bethel, CT)
Cindi Bigelow
Bonfire
Terry & Karen Bossieux
Dick & Chris Bradley
Braswell Family Farms (Nashville, NC)
Scott & Mary Lou Braswell
Hope & Doug Brown
Thomas & Mary Bruce

Claude & Hannah Burns
Scott & Diana Carlson
The Charis Foundation (Nashville, TN)
Cheatham County Long Term Recovery Organization (Ashland City, TN)
Christian Appalachian Project (Mount Vernon, KY)
Grace Fellowship Church (Johnson City, TN)
City of Johnson City Tennessee (Johnson City, TN)
Claude Worthington
Benedum Foundation (Pittsburgh, PA)
Cokesbury United Methodist Church (Knoxville, TN)
Colonial Heights United Methodist Church (Kingsport, TN)
Rick & Jane Combs
Mary Lee Comer
Commonwealth of Kentucky
The Community Foundation of Middle Tennessee (Nashville, TN)
Community Foundation of West Kentucky (Paducah, KY)
Community Lutheran Partners (Wheeling, WV)
Community Presbyterian Church (Chester, NJ)
Greg & Lori Corner
Covenant United Methodist Church (Springfield, PA)
John & Betty Ann Crandall
Walter & Pam Crouch

Angela & Bill Culbertson
Darrell Cales Trust (Rainelle, WV)
Greg Davis & Suzi Townsley
Dawn & Mark Deaton
Greg & Laura DeGennaro
Don G Powell Foundation (Houston, TX)
The Donley Foundation
David & Deirdre DuBard
East Point Ave United Methodist Church (East Point, GA)
East Tennessee Foundation (Knoxville, TN)
Eastman Credit Union (Kingsport, TN)
Eastman Foundation (Kingsport, TN)

The Edward & Wanda Jordan Foundation (Des Plaines, IL)
Chuck & Jane Ellis
Bruce & Sharon Elliston
Encore Ministry Foundation (Nashville, TN)
Luann Engelman
Chris Ernst
Eugene A & Suzanne H Gorab Foundation (Southport, CT)
Bill Evans
FAHE (Berea, KY)
Rachel Ferguson
EJ Ferrell & Dawn Stein
First Trinitarian Congregational Church (Scituate, MA)





First United Methodist
Church (Crystal Lake, IL)
First United Methodist
Church (Westborough,
MA)
First United Methodist
Church (Gatlinburg, TN)
First United Methodist
Church (Arlington
Heights, IL)
First United Methodist
Church (Farmington, MI)

First United Methodist
Church (Cary, NC)
Food City Charitable
Foundation (Abingdon,
VA)
Martha Forbes
Foundation for Appalachian
Kentucky (Hazard, KY)
Aaron and Diane Frazier
Brian & Carol Friday
Friends of Appalachia
(Trumbull, CT)
Emilee Barnes Frincke

General Electric Foundation
(Boston, MA)
Gisela B Hogan Charitable
Foundation (Boston, MA)
Gene & Suzanne Gorab
Ron & Gail Gouge
Brian & Heather Grafton
David Graham
Grandfather Community
Foundation (Linville, NC)
Grandview Christian Church
(Johnson City, TN)
Grandview United Methodist
Church (Lancaster, PA)
Greater Greenbrier
Long-Term Recovery
Committee (Lewisburg,
WV)
The Greater Greenbrier
Valley Community
Foundation (Lewisburg,
WV)
The Greater Kanawha Valley
Foundation (Charleston,
WV)
Greenfield Hill
Congregational Church
(Fairfield, CT)

Greg & Susan Griffith
Grindstone Ministries (Spiro,
OK)
Haggerty Family Foundation
(Minneapolis, MN)
Daniel Hannah
Dana Harrison
John & Phyllis Hart
Hartry Living Trust of 1986
(Fresno, CA)
Haygood United Methodist
Church (Virginia Beach,
VA)

Everett Hellmuth
Don & Emily Henderson
Mike & Julie Hodge
Harry & Jennifer Holdren
Holston Foundation (Alcoa,
TN)
Paxon McLean Holz
The Home Depot (Atlanta,
GA)
Homes for West Virginia/
SBP (New Orleans, LA)
Inspiritus (Salisbury, NC)
Isle of Hope United
Methodist Church
(Savannah, GA)
James & Rachael Butler
The Jeanne G Hamilton &
Lawson W Hamilton,
Jr Family Foundation
(Lewisburg, WV)
Jerusalem Evangelical
Lutheran Church
(Schwenksville, PA)
Jesse Lee Memorial United
Methodist Church
(Ridgefield, CT)
David & Grace Johnson
Junction Center for
Independent Living (Big
Stone Gap, VA)
Katonah United Methodist
Church (Katonah, NY)
Pat & Susie Kelly Jr
Chris Keuler
Pauletta King
The Knapp Foundation
(Bartlett, TN)
Ken & Annette Landers
Mike & Lisa LaRock
Cris Larzo
Lilly Endowment
(Indianapolis, IN)

Lowe's Companies Inc
(Mooresville, NC)
Lucille S Thompson Family
Foundation (Knoxville,
TN)
Mark & Ellen Manion
Bruce & Stephanie Markley
Hugh & Regina Mathews
Mayfield Graves Ltrg Inc
(Mayfield, KY)
Mark McIntyre
Ellen McNally
Roger & Kathy Metcalf
Vance & Teresa Meyer
Sara & Dennis Miller
Million Dollar Round Table
Foundation (Park Ridge,
IL)
Mooneyhan Family
Foundation (Johnson
City, TN)
Tom & Karan Moore
Essie Morgan
Mountain Empire Oil
Company (Johnson City,
TN)
Mountain Tough Recovery
Team (Pigeon Forge, TN)
Mullican Flooring (Johnson
City, TN)
Munsey Memorial United
Methodist Church
(Johnson City, TN)
Nassau Presbyterian Church
(Princeton, NJ)
Marilyn Nations
Neighbors Loving Neighbors
(Lewisburg, WV)
Northfield Church (Gallatin,
TN)
Justin Nunley



Operation USA (Los Angeles, CA)
 Katherine Ottinger
 Jonathan & Kristine Owen
 Park Bixby Towers (Los Angeles, CA)
 Pete & Ebba Patrick
 John & Lori Pearce
 Mike & Lynn Peters
 Dave & Mary Posek
 Potomac Highlands Fuller Center for Housing (Franklin, WV)
 Presbyterian Church Of Orland Park (Orland Park, IL)
 Jim Query
 Ray & Kay Eckstein
 Charitable Trust (Paducah, KY)
 Margaret Reid

James Rhodes
 Robert G Cabell III & Maude Morgan Cabell Foundation (Richmond, VA)
 Clarinda Roe
 The Romans 13:12 Fund (Wixom, MI)
 Saint Mary Magdalene Catholic Church (Apex, NC)
 Salem United Methodist Church (Manheim, PA)
 SBP (New Orleans, LA)
 Scepter (Waverly, TN)
 Jerry & Doris Seidelman
 Signal Crest United Methodist Church (Signal Mountain, TN)
 Solid Rock Carpenters (SRC) (Chicago, IL)

Speedway Children's Charities (Bristol, TN)
 Ss Simon & Jude Catholic Church (West Chester, PA)
 St Andrew's United Methodist Church (Findlay, OH)
 St John United Church (Columbia, MD)
 St Luke's United Methodist Church (Yorktown, VA)
 St Paul Lutheran Church (Davenport, IA)
 St Thomas of Villanova Parish (Palatine, IL)
 Stanley Black & Decker (New Britain, CT)
 State Farm Companies (Bloomington, IL)

Steele-Reese Foundation (Lexington, KY)
 Matt & Christine Stoops
 Jay & Elaine Stowe
 Tennessee Baptist Mission Board (Franklin, TN)
 Tennessee-Western Kentucky Conference (Nashville, TN)
 Mrs C Herman Terry
 The Thompson Charitable Foundation (Knoxville, TN)
 USDA (Kentucky)
 USDA (Tennessee)
 Trinity United Methodist Church (Birmingham, AL)
 Trinity United Methodist Church (Gainesville, FL)
 Unicare Life & Health Insurance Company (Cincinnati, OH)
 United Way of Washington County (Johnson City, TN)
 United Way of Greenbrier Valley (Lewisburg, WV)
 United Way of Humphreys County (Waverly, TN)
 VA USDA Rural Development

Vestavia Hills United Methodist Church (Vestavia Hills, AL)
 Frederick Von Batchelder
 Glenn Walker
 Waverly United Methodist Church (Waverly, TN)
 John & Debbie Wayne III
 West Side Presbyterian Church (Ridgewood, NJ)
 West Virginia Conference (Charleston, WV)
 West Virginia Hosing Development Fund (Charleston, WV)
 West Virginia University Foundation (Morgantown, WV)
 Doug & Cynthia West
 Westminster Presbyterian Church (Alexandria, VA)
 Westminster Presbyterian Church (Nashville, TN)
 White Plains United Methodist Church (Cary, NC)
 Brad & Glema Withrow
 Paul & Barbara Witman
 Vann & Anne York
 Randy Zinck

I grew up in a house much like these. I'm now 93 years old. God has truly blessed us. Thank you for your service to others!

—Betty, ASP Donor

SUMMER STAFF | 2024

KENTUCKY

Breathitt County (Jackson)

Ali Christensen
Leah Ellis
Adam Shelton (Center
Director)
Asa Thurnau

Harlan County (Harlan)

Maria Guzman
Scherenberg
Sophie Haugh (Center
Director)
Luke Nissen
Caleb Rowles

Knoft County (Carrie)

Svea Erickson
Rebecca Guiterrez (Center
Director)
Jonah Schultz
Bianca Silva

Leslie County (Hyden)

Kyra Dorn
Caroline Landis
Tyler Rhodes (Center
Director)
Talmadge Skillman

Magoffin County (Salyersville)

Grace Courtney
Annicka Esquivel (Center
Director)
David Frees
Jack Sutphen



Perry County (Slemp)

Joshua Anderson
Abigail Jenkins
Nicole Larson (Center
Director)
Graham Smith

TENNESSEE

Johnson County (Shady Valley)

Maddie Brashaw (Center
Director)
Sarah Nell Harp
Victoria Hiscott
Revel Stiles

Sullivan County (Kingsport)

Collin Daniels (Center
Director)
Lexi Jeffrey
Clarene Martin
Daphne Shipe

VIRGINIA

Dickenson County (Clintwood)

Madison Crow
Tatum Landers (Center
Director)
Elliot Olivarria
Harrison Snedeker

Lee County (Jonesville)

Jaxson Gassid
Sarah Govert (Center
Director)
Suzanne Kamungele
Carter Warhurst

Wise County (Appalachia)

Sarah Bates
Sarah Grosick (Center
Director)
Izzy Kestell
Belle Steed

WEST VIRGINIA

Clay County (Clay)

Emily Knaub (Center
Director)
Haley Murray
Lily Beth Norris

Fayette County (Ansted)

Rachel Edens
Amanda Lawrence (Center
Director)
Lacey Scott
Aidan Soha



**Greenbrier County
(Charmco)**
Cary Chiarelli
Henry Erickson
Emily Wagner
Bridget Williams (Center
Director)

**Kanawha County
(Charleston)**
Abbey Grace Bryant
Sam Humphrey (Center
Director)
Caitlin Reddig
David Smith

Logan County (Man)
Covey Byars (Center
Director)
Sarah Mohammed
Owen Ragsdale
Alex Shelton

**Wyoming County
(Brenton)**
Andrew Graddy
Grace Johnson
Lainee Kuhfuss
Katy Timari (Center
Director)

OTHER SUPPORT STAFF

Chaplains
Debra Arce
Lauren Canary
John Esposito
Shawn Winburn

Construction Consultants
John Edwards
Shelby Mitchinson
Chris Prew
James Shackelford
Grant Vermilya
James Williams

Interns
Taylor Beam (Story
Gathering)
Sarah Brassfield (Story
Gathering)
Kaylee DeGennaro
(Administrative)
Henry Scott (New Build)

Megan Murphy
Caroline Nowak
Haley Peck
Annalee Posey
Brendan Roney
Kristina Rowles
Alyssa Walawender

On-Call Counselors
John Clarke
Brooke Chehoski
Ally Forshay
Megan Kalbaugh
Fran Zarcone

Summer Liaisons
Alli Grosick
Fran Zyla

**Summer Management
Team**
Jane Cheema
Emma Christensen
Daniel Henninger
Julia Landis



EXECUTIVE LEADERSHIP TEAM

Melisa Winburn, President/ CEO
 Greg DeGennaro, Chief Financial Officer
 Matt Garland, Vice President of Operations
 Kate McKinnie, Vice President of Resource Development
 Kristina Rowles, Vice President of Home Repair
 Chris Schroeder, Vice President of New Build & Disaster Recovery

PRESIDENT'S OFFICE

Janice Torretta, Administrative Executive

ACCOUNTING

Lori Castell, Accounts Payable Specialist
 Gina Goetz, Director of Accounting
 Ihor Mashkin, Assistant Director of Accounting
 Susan Miller, Accounting Consultant
 Dylan Wagner, Accounting Specialist
 Paul Whittlesey, Accounting Specialist

ADVANCEMENT, GRANTS & PARTNERSHIPS

Lyssa Haddock, Senior Director of Advancement
 Lindsay Harris, Church & Foundation Grants Manager
 Sheryl Hartley, Director of Advancement Communications
 Dave Kelley, Senior Vice President for Donor Engagement
 Julie Knott, Strategic Grants Manager
 Flossie McCaffrey, Advancement Administrative Assistant
 Jim Powell, Director of Grants & Strategic Partnerships

Carson Tucker, Donor Engagement Officer

HOME REPAIR

Rose Chelednik, Tri-Cities Repair Program Manager
 Daniel Henninger, Home Repair Coordinator
 Harrison Ihrig, Home Repair Intern
 Sandy Marcovecchio, Home Repair Administrative Assistant
 Megan Murphy, Tri-Cities Grant Compliance Coordinator
 Caroline Nowak, Regional Coordinator
 Annalee Posey, Assistant Director of Home Repair

HUMAN RESOURCES

Emma Christensen, Hiring Program Manager
 Sam Lansinger, Director of Human Resources
 Gail Pond, Assistant Director of Human Resources (Retired)
 Brendan Roney, Assistant Director of Human Resources

MARKETING & COMMUNICATIONS

Chelsi Crockett, Marketing & Communications Manager
 Clara Leonard, Content Specialist

NEW BUILD & DISASTER RECOVERY

Ashley Allbrooks, Mayfield Disaster Recovery Team
 Mac Anderson, Mayfield Grant Compliance Coordinator
 Chuck Arnold, Mayfield Disaster Recovery Team
 Matt Akins, East TN Logistics Coordinator
 Ani Boyd, East TN Regional Director
 Jen Hale, East TN Case Management Coordinator
 William Hall, East TN Construction Superintendent
 Erin Hartley, Office & Grant Compliance Manager



Julie Knott, Program
Consultant
Haley Peck, New Build
& Disaster Recovery
Program Administrator
Mike Sexton, Kentucky
Disaster Recovery
Associate
Grant Vermilya, Kentucky
Disaster Recovery
Coordinator
Zeb Volpe, Contract
Associate

OPERATIONS

Carl Cunningham, Fleet,
Warehouse & Facilities
Manager
Skip Jones, IT Manager
Brick Smith, Warehouse
coordinator
Hart Teague, Office Manager
John Thompson, Grant
Compliance Manager
James Williams, Facilities
Manager

SPIRITUAL PROGRAMS

Jane Cheema, Director of
Spiritual Programs
Grayce Wise, Interyear
Fellow

VOLUNTEER

Allie Acevedo, Volunteer
Recruitment Manager
Marie Coffman, Volunteer
Administrative Assistant

Sarah Hunnicutt, Director
of Volunteers
Laura Moree, Volunteer
Specialist
Jen Rickert, Volunteer
Recruitment Specialist

ASP FELLOWS (2023-2024)

Alexis Barton, Jonesville
Madison Beaty, Jonesville
James Blanton, New Build
Collin Daniels, Kentucky
Disaster Recovery
Forest Good, Tri-Cities
Julie Landis, Jonesville
Center Director
Katy Timari, Jonesville

ASP FELLOWS (2024-2025)

Sarah Grosick, Jonesville
Izzy Kestell, Jonesville
Kait Morelock, East
Tennessee
Tyler Rhodes, Kentucky
Disaster Recovery
Alyssa Walawender,
Jonesville Center Director
Carter Warhurst, Jonesville
Bridget Williams, Kentucky
Disaster Recovery

BOARD OF DIRECTORS

Melisa Winburn,
President/CEO
Appalachia Service
Project
Johnson City, TN

John Pearce, *Chairperson*
Partner, Ernst & Young,
LLP (*Retired*)
Nashville, TN

Mike LaRock, *Vice Chair*
Assistant Vice President
for Foundations, Old
Dominion University,
Norfolk, VA

Ken Landers, *Secretary*
Captain, U.S. Navy
(*Retired*)
Fairfax, VA

Doug Anderson
Teaching Associate
Professor, The George
Washington University
(*Retired*)
Arlington, VA

Erik Andrews
Systems Engineering
Fellow, Vantage Systems
Oberlin, OH

Brian Brown
Senior Pastor,
Woodlawn-Faith United
Methodist Church
Arlington, VA

Bill Culbertson
William E. Culbertson
Real Estate
Kitty Hawk, NC

Chuck Ellis
Executive VP/Chief
Marketing Officer,
Time Warner Cable
(*Retired*)
Fairfield, CT

Brian Erickson
Sr. Pastor, Trinity United
Methodist Church
Homewood, AL

Michael Hodge
President/Owner, Hodge
Construction Company
Iowa City, Iowa

Leigh Johnson
Family Physician,
State of Franklin
Healthcare Associates
Johnson City, TN

Hattie Koher
Director of Youth
Ministry, First United
Methodist Church
LaGrange, IL

Emily Miller
Director of Development
& Communications,
Teens for Food Justice
New York, NY

Roger Mills, Jr.
Owner/General
Contractor, Mills Eloge
Homes
Charlotte, NC

Beth Moore
Partner, Sherrard Roe
Voight & Harbison, PLC
Nashville, TN

Meg Robertson
Executive Coach &
Non-profit Consultant,
Macvian Partners
Stanley, NC

Angela Struebing
Head of Consumer Card
Insights, Capital One
Arlington, VA

Alida Ward
Co-Pastor, Greenfield Hill
Congregational Church
Fairfield, CT

Brad Withrow
Partner, Ernst & Young,
LLP (*Retired*) & Real
Estate Investor
Hendersonville, TN

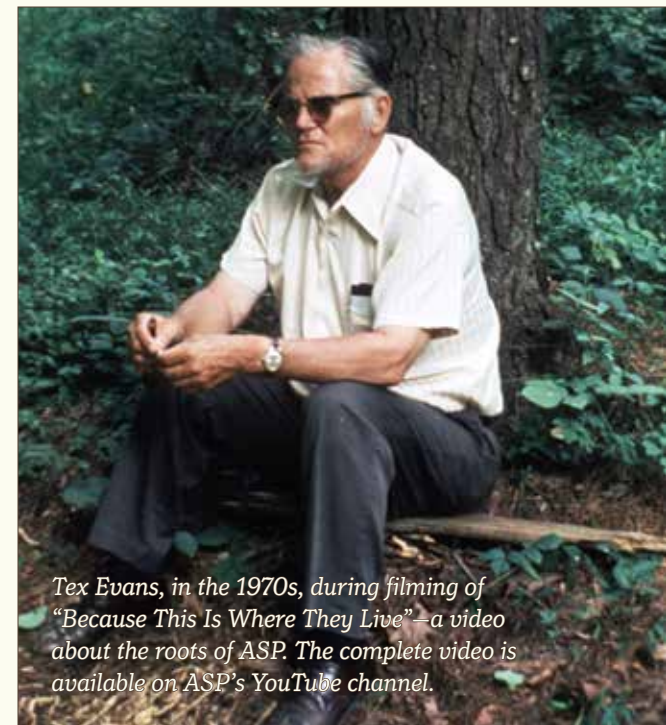
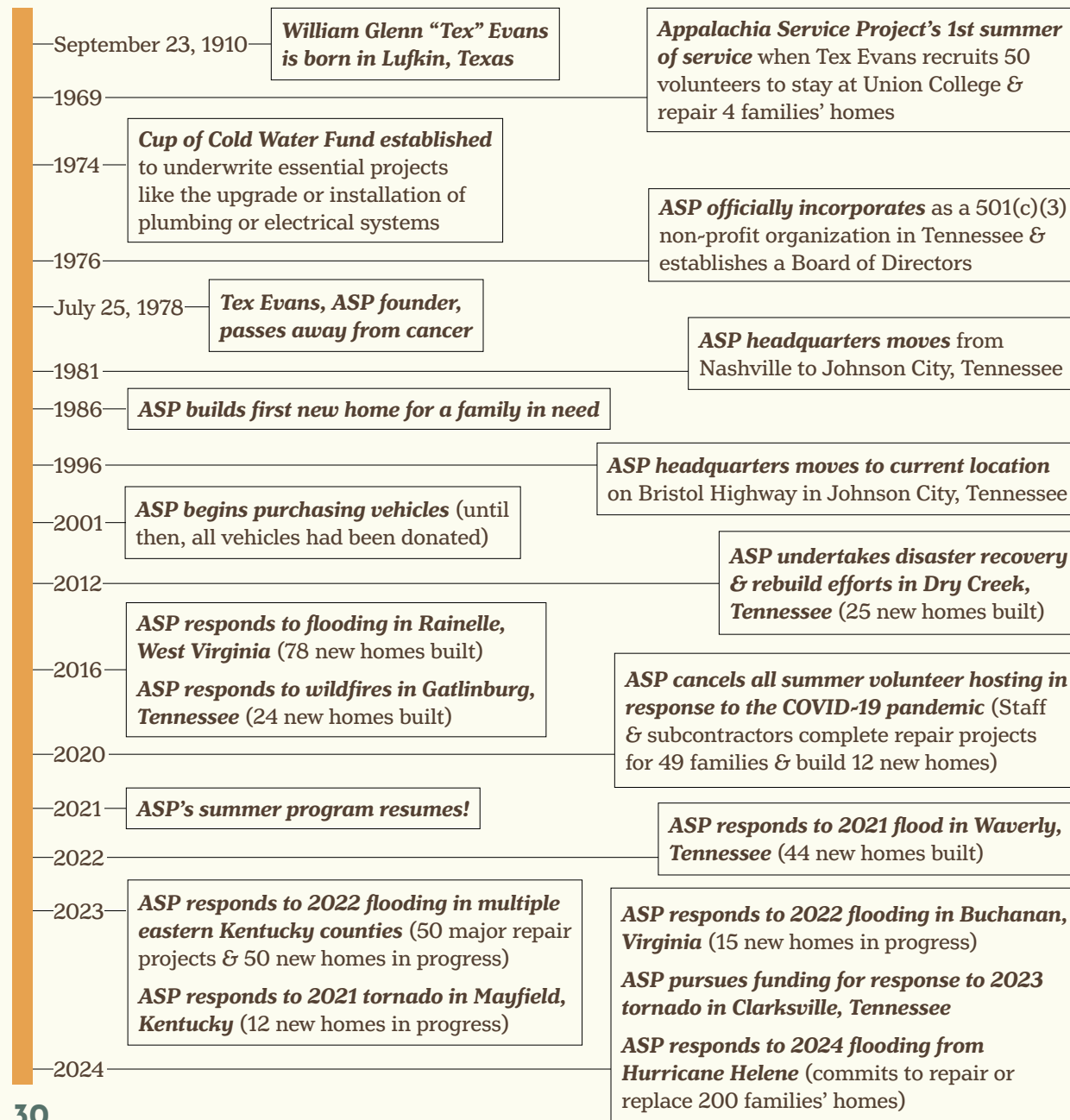
BOARD MEMBERS EMERITI

*Maurlea Babb
Rosemary Brown
*Jack Gilbert
Stuart Gulley
*Martha Harmon
*Rueben Job
*Harriett Keyes
David Lollis
George Morris
Jim Robinson
*Ralph Wicke

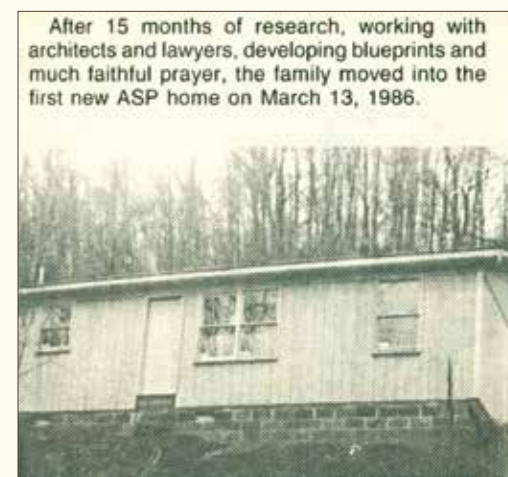
**in loving memory*

CELEBRATING 55 YEARS OF SERVICE

1969-2024



Tex Evans, in the 1970s, during filming of “Because This Is Where They Live”—a video about the roots of ASP. The complete video is available on ASP’s YouTube channel.



After 15 months of research, working with architects and lawyers, developing blueprints and much faithful prayer, the family moved into the first new ASP home on March 13, 1986.



Before and After!

ASP BY THE NUMBERS

	# families served with home repair	# families served with new homes	# volunteers who have served
1st Year	4	—	50
10 Years	2,851	—	21,638
20 Years	6,483	5	61,774
30 Years	9,465	134	144,737
40 Years	14,107	158	282,891
50 Years	19,492	320	443,137
55 Years	20,557	459	477,577





Appalachia Service Project
4523 Bristol Highway
Johnson City, TN 37601
Toll-free (866) 607-4433
ASPhome.org